

**LSD2 / AOF1 Antibody**  
Rabbit mAb  
Catalog # AP91524

## Specification

---

### LSD2 / AOF1 Antibody - Product Information

Application	WB, FC, ICC, IP
Primary Accession	<a href="#">Q8NB78</a>
Reactivity	Rat
Clonality	Monoclonal
<b>Other Names</b>	
AOF1; KDM1B; LSD2; Lysine-specific histone demethylase 1B; Lysine-specific histone demethylase 2;	
Isotype	Rabbit IgG
Host	Rabbit
Calculated MW	92098 Da

### LSD2 / AOF1 Antibody - Additional Information

Dilution	WB~~1:1000 FC~~1:10~50 ICC~~N/A IP~~N/A
Purification	Affinity-chromatography
Immunogen	A synthesized peptide derived from human LSD2 / AOF1
Description	Histone demethylase that demethylates 'Lys-4' of histone H3, a specific tag for epigenetic transcriptional activation, thereby acting as a corepressor. Required for de novo DNA methylation of a subset of imprinted genes during oogenesis. Acts by oxidizing the substrate by FAD to generate the corresponding imine that is subsequently hydrolyzed.
Storage Condition and Buffer	Rabbit IgG in phosphate buffered saline , pH 7.4, 150mM NaCl, 0.02% sodium azide and 50% glycerol. Store at +4°C short term. Store at -20°C long term. Avoid freeze / thaw cycle.

### LSD2 / AOF1 Antibody - Protein Information

Name KDM1B ([HGNC:21577](#))

#### Function

Histone demethylase that demethylates 'Lys-4' of histone H3, a specific tag for epigenetic transcriptional activation, thereby acting as a corepressor. Required for de novo DNA methylation

of a subset of imprinted genes during oogenesis. Acts by oxidizing the substrate by FAD to generate the corresponding imine that is subsequently hydrolyzed. Demethylates both mono- and di-methylated 'Lys-4' of histone H3. Has no effect on tri-methylated 'Lys-4', mono-, di- or tri-methylated 'Lys-9', mono-, di- or tri-methylated 'Lys-27', mono-, di- or tri-methylated 'Lys-36' of histone H3, or on mono-, di- or tri-methylated 'Lys-20' of histone H4. Alone, it is unable to demethylate H3K4me on nucleosomes and requires the presence of GLYR1 to achieve such activity, they form a multifunctional enzyme complex that modifies transcribed chromatin and facilitates Pol II transcription through nucleosomes (PubMed:[30970244](http://www.uniprot.org/citations/30970244)).

#### Cellular Location

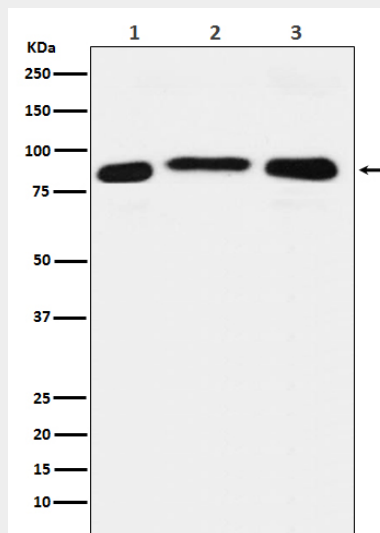
Nucleus. Chromosome. Note=Found in actively RNAPolIII- transcribed gene bodies.

#### LSD2 / AOF1 Antibody - Protocols

Provided below are standard protocols that you may find useful for product applications.

- [Western Blot](#)
- [Blocking Peptides](#)
- [Dot Blot](#)
- [Immunohistochemistry](#)
- [Immunofluorescence](#)
- [Immunoprecipitation](#)
- [Flow Cytometry](#)
- [Cell Culture](#)

#### LSD2 / AOF1 Antibody - Images



Western blot analysis of LSD2 / AOF1 expression in (1) HeLa cell lysate; (2) RAW264.7 cell lysate; (3) PC12 cell lysate.