

Ephrin B2 Antibody
Rabbit mAb
Catalog # AP91533**Specification**

Ephrin B2 Antibody - Product Information

Application	WB, ICC
Primary Accession	P52799
Reactivity	Rat
Clonality	Monoclonal
Other Names	
Efnb2; ephrin B2; EPLG5; Htk L; HTK ligand; HTK-L; HTKL; LERK5;	
Isotype	Rabbit IgG
Host	Rabbit
Calculated MW	36923 Da

Ephrin B2 Antibody - Additional Information

Dilution	WB~~1:1000 ICC~~N/A
Purification	Affinity-chromatography
Immunogen	A synthesized peptide derived from human Ephrin B2
Description	Cell surface transmembrane ligand for Eph receptors, a family of receptor tyrosine kinases which are crucial for migration, repulsion and adhesion during neuronal, vascular and epithelial development. Binds promiscuously Eph receptors residing on adjacent cells, leading to contact-dependent bidirectional signaling into neighboring cells.
Storage Condition and Buffer	Rabbit IgG in phosphate buffered saline , pH 7.4, 150mM NaCl, 0.02% sodium azide and 50% glycerol. Store at +4°C short term. Store at -20°C long term. Avoid freeze / thaw cycle.

Ephrin B2 Antibody - Protein Information**Name** EFNB2**Synonyms** EPLG5, HTKL, LERK5**Function**

Cell surface transmembrane ligand for Eph receptors, a family of receptor tyrosine kinases which are crucial for migration, repulsion and adhesion during neuronal, vascular and epithelial development. Binds promiscuously Eph receptors residing on adjacent cells, leading to

contact-dependent bidirectional signaling into neighboring cells. The signaling pathway downstream of the receptor is referred to as forward signaling while the signaling pathway downstream of the ephrin ligand is referred to as reverse signaling. Binds to receptor tyrosine kinase including EPHA4, EPHA3 and EPHB4. Together with EPHB4 plays a central role in heart morphogenesis and angiogenesis through regulation of cell adhesion and cell migration. EPHB4-mediated forward signaling controls cellular repulsion and segregation from EFNB2-expressing cells. May play a role in constraining the orientation of longitudinally projecting axons.

Cellular Location

Cell membrane; Single-pass type I membrane protein. Cell junction, adherens junction {ECO:0000250|UniProtKB:P52800}

Tissue Location

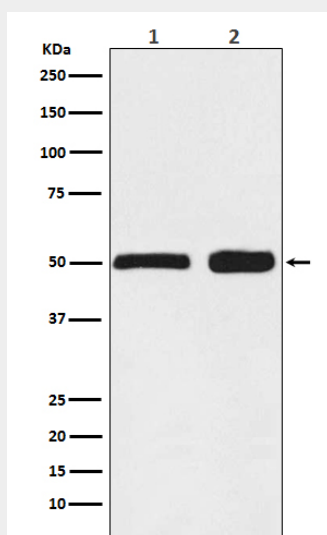
Lung and kidney.

Ephrin B2 Antibody - Protocols

Provided below are standard protocols that you may find useful for product applications.

- [Western Blot](#)
- [Blocking Peptides](#)
- [Dot Blot](#)
- [Immunohistochemistry](#)
- [Immunofluorescence](#)
- [Immunoprecipitation](#)
- [Flow Cytometry](#)
- [Cell Culture](#)

Ephrin B2 Antibody - Images



Western blot analysis of Ephrin B2 expression in (1) HEK293 cell lysate; (2) Mouse spleen lysate.