

Lamin B2 Antibody
Rabbit mAb
Catalog # AP91538**Specification**

Lamin B2 Antibody - Product Information

Application	WB, IHC, FC, ICC, IP
Primary Accession	Q03252
Reactivity	Rat
Clonality	Monoclonal
Other Names	
LAMB2; LMN 2; LMN B2; LMN2; LMNB2;	

Isotype	Rabbit IgG
Host	Rabbit
Calculated MW	69948 Da

Lamin B2 Antibody - Additional Information

Dilution	WB~~1:1000 IHC~~1:100~500 FC~~1:10~50 ICC~~N/A IP~~N/A
Purification	Affinity-chromatography
Immunogen	A synthesized peptide derived from human Lamin B2
Description	Lamins are components of the nuclear lamina, a fibrous layer on the nucleoplasmic side of the inner nuclear membrane, which is thought to provide a framework for the nuclear envelope and may also interact with chromatin.
Storage Condition and Buffer	Rabbit IgG in phosphate buffered saline , pH 7.4, 150mM NaCl, 0.02% sodium azide and 50% glycerol. Store at +4°C short term. Store at -20°C long term. Avoid freeze / thaw cycle.

Lamin B2 Antibody - Protein Information**Name** LMNB2**Synonyms** LMN2**Function**

Lamins are intermediate filament proteins that assemble into a filamentous meshwork, and which constitute the major components of the nuclear lamina, a fibrous layer on the nucleoplasmic side of the inner nuclear membrane (PubMed:<a href="http://www.uniprot.org/citations/33033404"

target="_blank">33033404). Lamins provide a framework for the nuclear envelope, bridging the nuclear envelope and chromatin, thereby playing an important role in nuclear assembly, chromatin organization, nuclear membrane and telomere dynamics (PubMed:33033404). The structural integrity of the lamina is strictly controlled by the cell cycle, as seen by the disintegration and formation of the nuclear envelope in prophase and telophase, respectively (PubMed:33033404).

Cellular Location

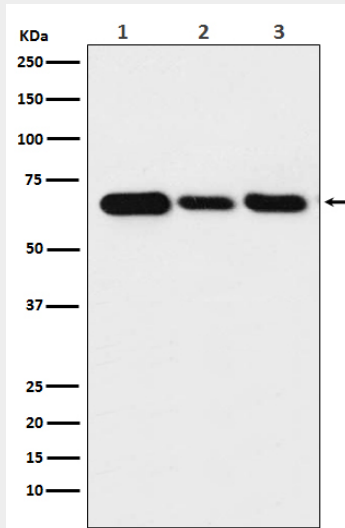
Nucleus lamina.

Lamin B2 Antibody - Protocols

Provided below are standard protocols that you may find useful for product applications.

- [Western Blot](#)
- [Blocking Peptides](#)
- [Dot Blot](#)
- [Immunohistochemistry](#)
- [Immunofluorescence](#)
- [Immunoprecipitation](#)
- [Flow Cytometry](#)
- [Cell Culture](#)

Lamin B2 Antibody - Images



Western blot analysis of Lamin B2 expression in (1) Jurkat cell lysate; (2) NIH/3T3 cell lysate; (3) C6 cell lysate.