

TRADD Antibody
Rabbit mAb
Catalog # AP91543**Specification****TRADD Antibody - Product Information**

Application	WB, IHC, ICC, IP
Primary Accession	Q15628
Reactivity	Rat
Clonality	Monoclonal

Other Names

AA930854; TNFR1 associated DEATH domain protein; tradd;

Isotype	Rabbit IgG
Host	Rabbit
Calculated MW	34247 Da

TRADD Antibody - Additional Information

Dilution	WB~~1:1000 IHC~~1:100~500 ICC~~N/A IP~~N/A
Purification	Affinity-chromatography
Immunogen	A synthesized peptide derived from human TRADD
Description	Adapter molecule for TNFRSF1A/TNFR1 that specifically associates with the cytoplasmic domain of activated TNFRSF1A/TNFR1 mediating its interaction with FADD. Overexpression of TRADD leads to two major TNF-induced responses, apoptosis and activation of NF-kappa-B.
Storage Condition and Buffer	Rabbit IgG in phosphate buffered saline , pH 7.4, 150mM NaCl, 0.02% sodium azide and 50% glycerol. Store at +4°C short term. Store at -20°C long term. Avoid freeze / thaw cycle.

TRADD Antibody - Protein Information**Name** TRADD {ECO:0000303|PubMed:7758105, ECO:0000312|HGNC:HGNC:12030}**Function**

Adapter molecule for TNFRSF1A/TNFR1 that specifically associates with the cytoplasmic domain of activated TNFRSF1A/TNFR1 mediating its interaction with FADD (PubMed:23955153, PubMed:7758105, PubMed:8612133). Overexpression

of TRADD leads to two major TNF-induced responses, apoptosis and activation of NF-kappa-B (PubMed:7758105, PubMed:8612133). The nuclear form acts as a tumor suppressor by preventing ubiquitination and degradation of isoform p19ARF/ARF of CDKN2A by TRIP12: acts by interacting with TRIP12, leading to disrupt interaction between TRIP12 and isoform p19ARF/ARF of CDKN2A (By similarity).

Cellular Location

Nucleus {ECO:0000250|UniProtKB:Q3U0V2}. Cytoplasm. Cytoplasm, cytoskeleton. Note=Shuttles between the cytoplasm and the nucleus. {ECO:0000250|UniProtKB:Q3U0V2}

Tissue Location

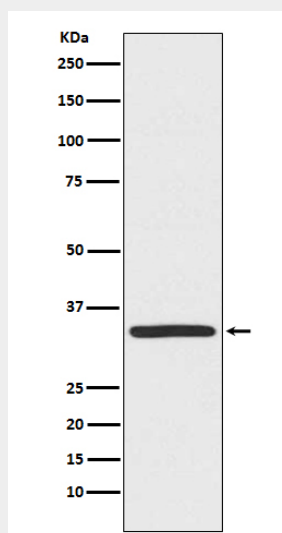
Found in all examined tissues.

TRADD Antibody - Protocols

Provided below are standard protocols that you may find useful for product applications.

- [Western Blot](#)
- [Blocking Peptides](#)
- [Dot Blot](#)
- [Immunohistochemistry](#)
- [Immunofluorescence](#)
- [Immunoprecipitation](#)
- [Flow Cytometry](#)
- [Cell Culture](#)

TRADD Antibody - Images



Western blot analysis of TRADD expression in HeLa cell lysate.