

**CTLA4 (CD152) Antibody**  
**Rabbit mAb**  
**Catalog # AP91546****Specification**

---

**CTLA4 (CD152) Antibody - Product Information**

Application	WB, ICC
Primary Accession	<a href="#">P16410</a>
Reactivity	Rat
Clonality	Monoclonal
<b>Other Names</b>	
CTLA4;CD;CD152;CELIAC3;CTLA-4;GRD4;GSE;ICOS;IDDM12;	
Isotype	Rabbit IgG
Host	Rabbit
Calculated MW	24656 Da

**CTLA4 (CD152) Antibody - Additional Information**

Dilution	WB~~1:1000 ICC~~N/A
Purification	Affinity-chromatography
Immunogen	A synthesized peptide derived from human CTLA4 (CD152)
Description	Inhibitory receptor acting as a major negative regulator of T-cell responses. The affinity of CTLA4 for its natural B7 family ligands, CD80 and CD86, is considerably stronger than the affinity of their cognate stimulatory coreceptor CD28.
Storage Condition and Buffer	Rabbit IgG in phosphate buffered saline , pH 7.4, 150mM NaCl, 0.02% sodium azide and 50% glycerol. Store at +4°C short term. Store at -20°C long term. Avoid freeze / thaw cycle.

**CTLA4 (CD152) Antibody - Protein Information****Name** CTLA4**Synonyms** CD152**Function**

Inhibitory receptor acting as a major negative regulator of T-cell responses. The affinity of CTLA4 for its natural B7 family ligands, CD80 and CD86, is considerably stronger than the affinity of their cognate stimulatory coreceptor CD28.

**Cellular Location**

Cell membrane; Single-pass type I membrane protein. Note=Exists primarily an intracellular

antigen whose surface expression is tightly regulated by restricted trafficking to the cell surface and rapid internalization

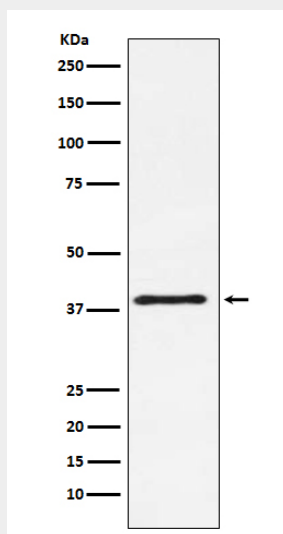
**Tissue Location**

Widely expressed with highest levels in lymphoid tissues. Detected in activated T-cells where expression levels are 30- to 50-fold less than CD28, the stimulatory coreceptor, on the cell surface following activation.

**CTLA4 (CD152) Antibody - Protocols**

Provided below are standard protocols that you may find useful for product applications.

- [Western Blot](#)
- [Blocking Peptides](#)
- [Dot Blot](#)
- [Immunohistochemistry](#)
- [Immunofluorescence](#)
- [Immunoprecipitation](#)
- [Flow Cytometry](#)
- [Cell Culture](#)

**CTLA4 (CD152) Antibody - Images**

Western blot analysis of CTLA4 (CD152) expression in NIH/3T3 cell lysate.