

IKB epsilon Antibody
Rabbit mAb
Catalog # AP91548**Specification**

IKB epsilon Antibody - Product Information

| | |
|--|------------------------|
| Application | WB, IHC, ICC, IP |
| Primary Accession | O00221 |
| Clonality | Monoclonal |
| Other Names | |
| I-kappa-B-epsilon; IkappaBepsilon; Ikb-E; Ikb-epsilon; IKBE; NF-kappa-B inhibitor epsilon; NF-kappa-BIE; NFKBIE; | |
| Isotype | Rabbit IgG |
| Host | Rabbit |
| Calculated MW | 52864 Da |

IKB epsilon Antibody - Additional Information

| | |
|------------------------------|---|
| Dilution | WB~~1:1000 IHC~~1:100~500 ICC~~N/A IP~~N/A |
| Purification | Affinity-chromatography |
| Immunogen | A synthesized peptide derived from human IKB epsilon |
| Description | Inhibits NF-kappa-B by complexing with and trapping it in the cytoplasm. Inhibits DNA-binding of NF-kappa-B p50-p65 and p50-c-Rel complexes. |
| Storage Condition and Buffer | Rabbit IgG in phosphate buffered saline , pH 7.4, 150mM NaCl, 0.02% sodium azide and 50% glycerol. Store at +4°C short term. Store at -20°C long term. Avoid freeze / thaw cycle. |

IKB epsilon Antibody - Protein Information**Name** NFKBIE**Synonyms** IKBE**Function**

Sequesters NF-kappa-B transcription factor complexes in the cytoplasm, thereby inhibiting their activity (PubMed:9315679). Sequestered complexes include NFKB1-RELA (p50-p65) and NFKB1-REL (p50- c-Rel) complexes (PubMed:9135156, PubMed:9315679). Limits B-cell activation in response to pathogens, and also plays

an important role in B-cell development (By similarity).

Cellular Location

Cytoplasm.

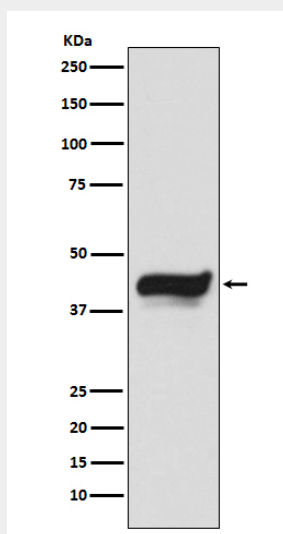
Tissue Location

Highly expressed in spleen, testis and lung, followed by kidney, pancreas, heart, placenta and brain. Also expressed in granulocytes and macrophages

IKB epsilon Antibody - Protocols

Provided below are standard protocols that you may find useful for product applications.

- [Western Blot](#)
- [Blocking Peptides](#)
- [Dot Blot](#)
- [Immunohistochemistry](#)
- [Immunofluorescence](#)
- [Immunoprecipitation](#)
- [Flow Cytometry](#)
- [Cell Culture](#)

IKB epsilon Antibody - Images

Western blot analysis of IKB epsilon expression in HeLa cell lysate.