

**RAP80 Antibody**  
**Rabbit mAb**  
**Catalog # AP91550**

## Specification

### RAP80 Antibody - Product Information

Application	WB, IHC, ICC
Primary Accession	<a href="#">Q96RL1</a>
Clonality	Monoclonal
<b>Other Names</b>	
BRCA1-A complex subunit RAP80; RAP80; Receptor associated protein 80; RIP110; Rxrip110; UIMC1; X2HRIP110;	
Isotype	Rabbit IgG
Host	Rabbit
Calculated MW	79727 Da

### RAP80 Antibody - Additional Information

Dilution	WB~~1:1000 IHC~~1:100~500 ICC~~N/A
Purification	Affinity-chromatography
Immunogen	A synthesized peptide derived from human RAP80
Description	Ubiquitin-binding protein that specifically recognizes and binds 'Lys-63'-linked ubiquitin. Plays a central role in the BRCA1-A complex by specifically binding 'Lys-63'-linked ubiquitinated histones H2A and H2AX at DNA lesions sites, leading to target the BRCA1-BARD1 heterodimer to sites of DNA damage at double-strand breaks (DSBs).
Storage Condition and Buffer	Rabbit IgG in phosphate buffered saline , pH 7.4, 150mM NaCl, 0.02% sodium azide and 50% glycerol. Store at +4°C short term. Store at -20°C long term. Avoid freeze / thaw cycle.

### RAP80 Antibody - Protein Information

**Name** UIMC1

**Synonyms** RAP80, RXRIP110

#### Function

Ubiquitin-binding protein (PubMed:<a href="http://www.uniprot.org/citations/24627472" target="\_blank">24627472</a>). Specifically recognizes and binds 'Lys-63'-linked ubiquitin

(PubMed:<a href="http://www.uniprot.org/citations/19328070" target="\_blank">19328070</a>, Ref.38). Plays a central role in the BRCA1-A complex by specifically binding 'Lys-63'-linked ubiquitinated histones H2A and H2AX at DNA lesions sites, leading to target the BRCA1-BARD1 heterodimer to sites of DNA damage at double-strand breaks (DSBs). The BRCA1-A complex also possesses deubiquitinase activity that specifically removes 'Lys-63'- linked ubiquitin on histones H2A and H2AX. Also weakly binds monoubiquitin but with much less affinity than 'Lys-63'-linked ubiquitin. May interact with monoubiquitinated histones H2A and H2B; the relevance of such results is however unclear in vivo. Does not bind Lys-48'-linked ubiquitin. May indirectly act as a transcriptional repressor by inhibiting the interaction of NR6A1 with the corepressor NCOR1.

#### Cellular Location

Nucleus. Note=Localizes at sites of DNA damage at double-strand breaks (DSBs)

#### Tissue Location

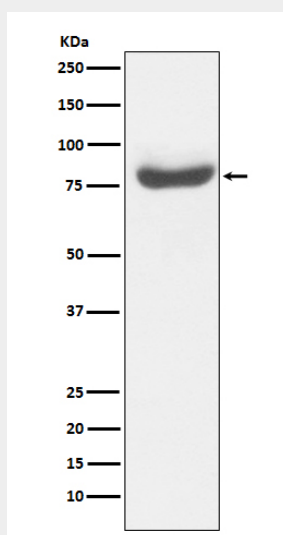
Expressed in testis, ovary, thymus and heart. Expressed in germ cells of the testis.

### RAP80 Antibody - Protocols

Provided below are standard protocols that you may find useful for product applications.

- [Western Blot](#)
- [Blocking Peptides](#)
- [Dot Blot](#)
- [Immunohistochemistry](#)
- [Immunofluorescence](#)
- [Immunoprecipitation](#)
- [Flow Cytometry](#)
- [Cell Culture](#)

### RAP80 Antibody - Images



Western blot analysis of RAP80 expression in 293T cell lysate.