

**MALT1 Antibody**  
**Rabbit mAb**  
**Catalog # AP91553**

## Specification

### MALT1 Antibody - Product Information

Application	WB, FC, ICC
Primary Accession	<a href="#">O9UDY8</a>
Clonality	Monoclonal
<b>Other Names</b>	
Malt1; MLT1; Mucosa associated lymphoid tissue lymphoma translocation gene 1; Paracaspase;	
Isotype	Rabbit IgG
Host	Rabbit
Calculated MW	92272 Da

### MALT1 Antibody - Additional Information

Dilution	WB~~1:1000 FC~~1:10~50 ICC~~N/A
Purification	Affinity-chromatography
Immunogen	A synthesized peptide derived from human MALT1
Description	Enhances BCL10-induced activation of NF-kappa-B. Involved in nuclear export of BCL10. Binds to TRAF6, inducing TRAF6 oligomerization and activation of its ligase activity. Has ubiquitin ligase activity. MALT1-dependent BCL10 cleavage plays an important role in T-cell antigen receptor-induced integrin adhesion.
Storage Condition and Buffer	Rabbit IgG in phosphate buffered saline , pH 7.4, 150mM NaCl, 0.02% sodium azide and 50% glycerol. Store at +4°C short term. Store at -20°C long term. Avoid freeze / thaw cycle.

### MALT1 Antibody - Protein Information

**Name** MALT1 {ECO:0000303|PubMed:10523859, ECO:0000312|HGNC:HGNC:6819}

#### Function

Protease that enhances BCL10-induced activation: acts via formation of CBM complexes that channel adaptive and innate immune signaling downstream of CARD domain-containing proteins (CARD9, CARD11 and CARD14) to activate NF-kappa-B and MAP kinase p38 pathways which stimulate expression of genes encoding pro-inflammatory cytokines and chemokines (PubMed:<a href="http://www.uniprot.org/citations/11262391" target="\_blank">11262391</a>, PubMed:<a href="http://www.uniprot.org/citations/18264101" target="\_blank">18264101</a>, PubMed:<a href="http://www.uniprot.org/citations/18264101" target="\_blank">18264101</a>).

href="http://www.uniprot.org/citations/24074955" target="\_blank">24074955</a>). Mediates BCL10 cleavage: MALT1-dependent BCL10 cleavage plays an important role in T-cell antigen receptor-induced integrin adhesion (PubMed:<a href="http://www.uniprot.org/citations/11262391" target="\_blank">11262391</a>, PubMed:<a href="http://www.uniprot.org/citations/18264101" target="\_blank">18264101</a>). Involved in the induction of T helper 17 cells (Th17) differentiation (PubMed:<a href="http://www.uniprot.org/citations/11262391" target="\_blank">11262391</a>, PubMed:<a href="http://www.uniprot.org/citations/18264101" target="\_blank">18264101</a>). Cleaves RC3H1 and ZC3H12A in response to T-cell receptor (TCR) stimulation which releases their cooperatively repressed targets to promote Th17 cell differentiation (By similarity). Also mediates cleavage of N4BP1 in T-cells following TCR-mediated activation, leading to N4BP1 inactivation (PubMed:<a href="http://www.uniprot.org/citations/31133753" target="\_blank">31133753</a>). May also have ubiquitin ligase activity: binds to TRAF6, inducing TRAF6 oligomerization and activation of its ligase activity (PubMed:<a href="http://www.uniprot.org/citations/14695475" target="\_blank">14695475</a>).

#### **Cellular Location**

Cytoplasm, perinuclear region. Nucleus Note=Shuttles between the nucleus and cytoplasm. Found in perinuclear structures together with BCL10.

#### **Tissue Location**

Highly expressed in peripheral blood mononuclear cells. Detected at lower levels in bone marrow, thymus and lymph node, and at very low levels in colon and lung

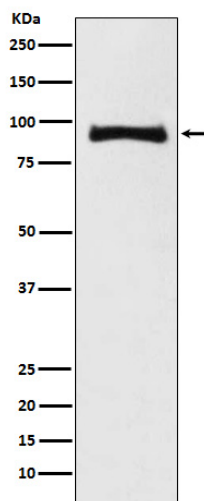
### **MALT1 Antibody - Protocols**

Provided below are standard protocols that you may find useful for product applications.

- [Western Blot](#)
- [Blocking Peptides](#)
- [Dot Blot](#)
- [Immunohistochemistry](#)
- [Immunofluorescence](#)
- [Immunoprecipitation](#)
- [Flow Cytometry](#)
- [Cell Culture](#)

### **MALT1 Antibody - Images**





Western blot analysis of MALT1 expression in Jurkat cell lysate.