

**COX6A1 Antibody (Center)**  
**Affinity Purified Rabbit Polyclonal Antibody (Pab)**  
**Catalog # AP9155c****Specification**

---

**COX6A1 Antibody (Center) - Product Information**

Application	WB, FC, IHC-P,E
Primary Accession	<a href="#">P12074</a>
Other Accession	<a href="#">Q9TTT7</a>
Reactivity	Human
Predicted	Rabbit
Host	Rabbit
Clonality	Polyclonal
Isotype	Rabbit IgG
Calculated MW	12155
Antigen Region	50-78

**COX6A1 Antibody (Center) - Additional Information****Gene ID** 1337**Other Names**

Cytochrome c oxidase subunit 6A1, mitochondrial, Cytochrome c oxidase polypeptide VIa-liver, Cytochrome c oxidase subunit VIA-liver, COX VIa-L, COX6A1, COX6AL

**Target/Specificity**

This COX6A1 antibody is generated from rabbits immunized with a KLH conjugated synthetic peptide between 50-78 amino acids from the Central region of human COX6A1.

**Dilution**

WB~~1:1000  
FC~~1:10~50  
IHC-P~~1:50~100  
E~~Use at an assay dependent concentration.

**Format**

Purified polyclonal antibody supplied in PBS with 0.09% (W/V) sodium azide. This antibody is purified through a protein A column, followed by peptide affinity purification.

**Storage**

Maintain refrigerated at 2-8°C for up to 2 weeks. For long term storage store at -20°C in small aliquots to prevent freeze-thaw cycles.

**Precautions**

COX6A1 Antibody (Center) is for research use only and not for use in diagnostic or therapeutic procedures.

**COX6A1 Antibody (Center) - Protein Information**

**Name** COX6A1

**Synonyms** COX6AL

**Function** Component of the cytochrome c oxidase, the last enzyme in the mitochondrial electron transport chain which drives oxidative phosphorylation. The respiratory chain contains 3 multisubunit complexes succinate dehydrogenase (complex II, CII), ubiquinol- cytochrome c oxidoreductase (cytochrome b-c1 complex, complex III, CIII) and cytochrome c oxidase (complex IV, CIV), that cooperate to transfer electrons derived from NADH and succinate to molecular oxygen, creating an electrochemical gradient over the inner membrane that drives transmembrane transport and the ATP synthase. Cytochrome c oxidase is the component of the respiratory chain that catalyzes the reduction of oxygen to water. Electrons originating from reduced cytochrome c in the intermembrane space (IMS) are transferred via the dinuclear copper A center (CU(A)) of subunit 2 and heme A of subunit 1 to the active site in subunit 1, a binuclear center (BNC) formed by heme A3 and copper B (CU(B)). The BNC reduces molecular oxygen to 2 water molecules using 4 electrons from cytochrome c in the IMS and 4 protons from the mitochondrial matrix.

**Cellular Location**

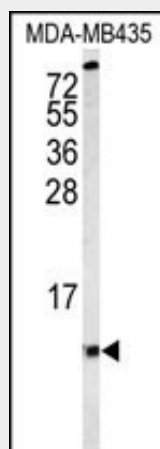
Mitochondrion inner membrane; Single-pass membrane protein

**COX6A1 Antibody (Center) - Protocols**

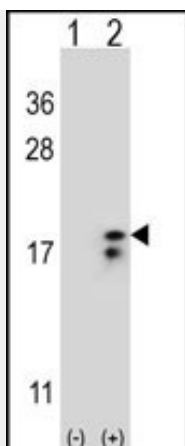
Provided below are standard protocols that you may find useful for product applications.

- [Western Blot](#)
- [Blocking Peptides](#)
- [Dot Blot](#)
- [Immunohistochemistry](#)
- [Immunofluorescence](#)
- [Immunoprecipitation](#)
- [Flow Cytometry](#)
- [Cell Culture](#)

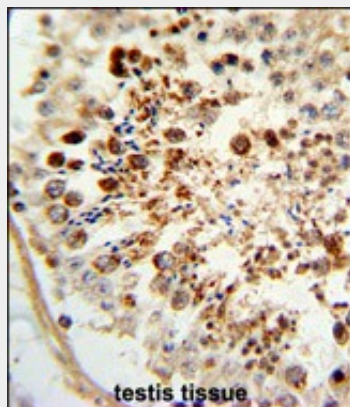
**COX6A1 Antibody (Center) - Images**



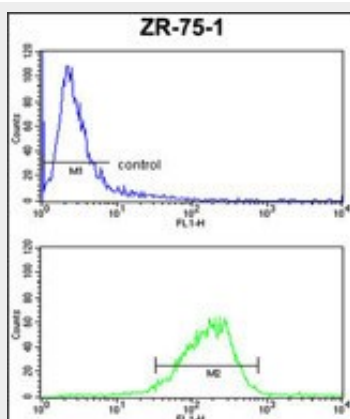
Western blot analysis of COX6A1 Antibody (Center) (Cat. #AP9155c) in MDA-MB435 cell line lysates (35ug/lane). COX6A1 (arrow) was detected using the purified Pab.



Western blot analysis of COX6A1 (arrow) using rabbit polyclonal COX6A1 Antibody (Center) (Cat. #AP9155c). 293 cell lysates (2 ug/lane) either nontransfected (Lane 1) or transiently transfected (Lane 2) with the COX6A1 gene.



Formalin-fixed and paraffin-embedded human testis tissue reacted with COX6A1 Antibody (Center), which was peroxidase-conjugated to the secondary antibody, followed by DAB staining. This data demonstrates the use of this antibody for immunohistochemistry; clinical relevance has not been evaluated.



COX6A1 Antibody (Center) (Cat.#AP9155c) FC analysis of ZR-75-1 cells (bottom histogram) compared to a negative control cell (top histogram). FITC-conjugated goat-anti-rabbit secondary antibodies were used for the analysis.

#### COX6A1 Antibody (Center) - Background

This protein is one of the nuclear-coded polypeptide chains of cytochrome c oxidase, the terminal

oxidase in mitochondrial electron transport.

#### **COX6A1 Antibody (Center) - References**

Hochstrasser D.F., et.al., Electrophoresis 13:992-1001(1992).