

**POMC Antibody**  
**Rabbit mAb**  
**Catalog # AP91569****Specification**

---

**POMC Antibody - Product Information**

Application	WB, IHC, IP
Primary Accession	<a href="#">P01189</a>
Reactivity	Rat
Clonality	Monoclonal
<b>Other Names</b>	
LPH; MSH; NPP; POC; ACTH; CLIP;	

Isotype	Rabbit IgG
Host	Rabbit
Calculated MW	29424 Da

**POMC Antibody - Additional Information**

Dilution	WB~~1:1000 IHC~~1:100~500 IP~~N/A
Purification	Affinity-chromatography
Immunogen	A synthesized peptide derived from human POMC
Description	ACTH stimulates the adrenal glands to release cortisol. MSH (melanocyte-stimulating hormone) increases the pigmentation of skin by increasing melanin production in melanocytes. Beta-endorphin and Met-enkephalin are endogenous opiates.
Storage Condition and Buffer	Rabbit IgG in phosphate buffered saline , pH 7.4, 150mM NaCl, 0.02% sodium azide and 50% glycerol. Store at +4°C short term. Store at -20°C long term. Avoid freeze / thaw cycle.

**POMC Antibody - Protein Information****Name** POMC**Function**

[Corticotropin]: Stimulates the adrenal glands to release cortisol. [Melanocyte-stimulating hormone beta]: Increases the pigmentation of skin by increasing melanin production in melanocytes. [Met-enkephalin]: Endogenous opiate.

**Cellular Location**

Secreted {ECO:0000250|UniProtKB:P01193}. Note=Melanocyte-stimulating hormone alpha and

beta-endorphin are stored in separate granules in hypothalamic POMC neurons, suggesting that secretion may be under the control of different regulatory mechanisms  
{ECO:0000250|UniProtKB:P01193}

#### Tissue Location

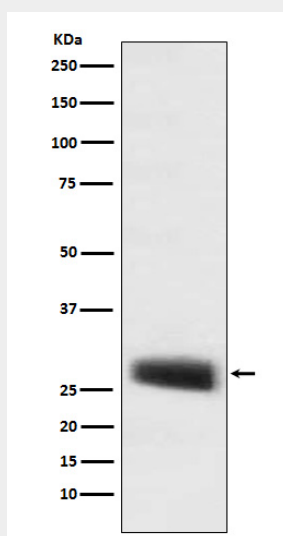
ACTH and MSH are produced by the pituitary gland.

#### POMC Antibody - Protocols

Provided below are standard protocols that you may find useful for product applications.

- [Western Blot](#)
- [Blocking Peptides](#)
- [Dot Blot](#)
- [Immunohistochemistry](#)
- [Immunofluorescence](#)
- [Immunoprecipitation](#)
- [Flow Cytometry](#)
- [Cell Culture](#)

#### POMC Antibody - Images



Western blot analysis of POMC expression in mouse pituitary lysate.