

**CD166 Antibody**  
**Rabbit mAb**  
**Catalog # AP91588****Specification**

---

**CD166 Antibody - Product Information**

Application	WB, IHC, FC, ICC, IP
Primary Accession	<a href="#">Q13740</a>
Reactivity	Rat
Clonality	Monoclonal
<b>Other Names</b>	
ALCAM; CD166; MEMD;	

Isotype	Rabbit IgG
Host	Rabbit
Calculated MW	65102 Da

**CD166 Antibody - Additional Information**

Dilution	WB~~1:1000 IHC~~1:100~500 FC~~1:10~50 ICC~~N/A IP~~N/A
Purification	Affinity-chromatography
Immunogen	A synthesized peptide derived from human CD166
Description	Cell adhesion molecule that binds to CD6. Involved in neurite extension by neurons via heterophilic and homophilic interactions. May play a role in the binding of T- and B-cells to activated leukocytes, as well as in interactions between cells of the nervous system.
Storage Condition and Buffer	Rabbit IgG in phosphate buffered saline , pH 7.4, 150mM NaCl, 0.02% sodium azide and 50% glycerol. Store at +4°C short term. Store at -20°C long term. Avoid freeze / thaw cycle.

**CD166 Antibody - Protein Information****Name** ALCAM**Synonyms** MEMD {ECO:0000303|PubMed:9502422}**Function**

Cell adhesion molecule that mediates both heterotypic cell- cell contacts via its interaction with CD6, as well as homotypic cell- cell contacts (PubMed:&lt;a

[15048703](http://www.uniprot.org/citations/15048703), PubMed: [15496415](http://www.uniprot.org/citations/15496415), PubMed: [16352806](http://www.uniprot.org/citations/16352806), PubMed: [23169771](http://www.uniprot.org/citations/23169771), PubMed: [24945728](http://www.uniprot.org/citations/24945728), PubMed: [7760007](http://www.uniprot.org/citations/7760007)). Promotes T-cell activation and proliferation via its interactions with CD6 (PubMed: [15048703](http://www.uniprot.org/citations/15048703), PubMed: [16352806](http://www.uniprot.org/citations/16352806), PubMed: [24945728](http://www.uniprot.org/citations/24945728)). Contributes to the formation and maturation of the immunological synapse via its interactions with CD6 (PubMed: [15294938](http://www.uniprot.org/citations/15294938), PubMed: [16352806](http://www.uniprot.org/citations/16352806)). Mediates homotypic interactions with cells that express ALCAM (PubMed: [15496415](http://www.uniprot.org/citations/15496415), PubMed: [16352806](http://www.uniprot.org/citations/16352806)). Acts as a ligand for the LILRB4 receptor, enhancing LILRB4-mediated inhibition of T cell proliferation (PubMed: [29263213](http://www.uniprot.org/citations/29263213)). Required for normal hematopoietic stem cell engraftment in the bone marrow (PubMed: [24740813](http://www.uniprot.org/citations/24740813)). Mediates attachment of dendritic cells onto endothelial cells via homotypic interaction (PubMed: [23169771](http://www.uniprot.org/citations/23169771)). Inhibits endothelial cell migration and promotes endothelial tube formation via homotypic interactions (PubMed: [15496415](http://www.uniprot.org/citations/15496415), PubMed: [23169771](http://www.uniprot.org/citations/23169771)). Required for normal organization of the lymph vessel network. Required for normal hematopoietic stem cell engraftment in the bone marrow. Plays a role in hematopoiesis; required for normal numbers of hematopoietic stem cells in bone marrow. Promotes in vitro osteoblast proliferation and differentiation (By similarity). Promotes neurite extension, axon growth and axon guidance; axons grow preferentially on surfaces that contain ALCAM. Mediates outgrowth and pathfinding for retinal ganglion cell axons (By similarity).

### Cellular Location

Cell membrane; Single-pass type I membrane protein. Cell projection, axon {ECO:0000250|UniProtKB:Q61490}. Cell projection, dendrite {ECO:0000250|UniProtKB:Q61490}. Note=Detected at the immunological synapse, i.e., at the contact zone between antigen-presenting dendritic cells and T-cells (PubMed:15294938, PubMed:16352806). Colocalizes with CD6 and the TCR/CD3 complex at the immunological synapse (PubMed:15294938).

### Tissue Location

Detected on hematopoietic stem cells derived from umbilical cord blood (PubMed:24740813). Detected on lymph vessel endothelial cells, skin and tonsil (PubMed:23169771). Detected on peripheral blood monocytes (PubMed:15048703). Detected on monocyte-derived dendritic cells (at protein level) (PubMed:16352806). Detected at low levels in spleen, placenta, liver (PubMed:9502422). Expressed by activated T-cells, B-cells, monocytes and thymic epithelial cells (PubMed:7760007). Isoform 1 and isoform 3 are detected in vein and artery endothelial cells, astrocytes, keratinocytes and artery smooth muscle cells (PubMed:15496415). Expressed by neurons in the brain Restricted expression in tumor cell lines. Detected in highly metastasizing melanoma cell lines (PubMed:9502422)

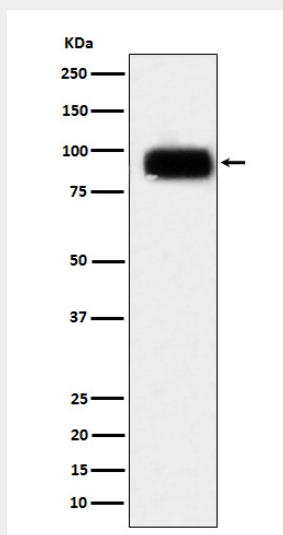
### CD166 Antibody - Protocols

Provided below are standard protocols that you may find useful for product applications.

- [Western Blot](#)

- [Blocking Peptides](#)
- [Dot Blot](#)
- [Immunohistochemistry](#)
- [Immunofluorescence](#)
- [Immunoprecipitation](#)
- [Flow Cytometry](#)
- [Cell Culture](#)

### CD166 Antibody - Images



Western blot analysis of CD166 expression in Daudi cell lysate.