

IQGAP1 Antibody
Rabbit mAb
Catalog # AP91595**Specification**

IQGAP1 Antibody - Product Information

| | |
|---------------------|------------------------|
| Application | WB, IHC, FC, ICC |
| Primary Accession | P46940 |
| Clonality | Monoclonal |
| Other Names | |
| Iqgap1; p195; SAR1; | |
| Isotype | Rabbit IgG |
| Host | Rabbit |
| Calculated MW | 189252 Da |

IQGAP1 Antibody - Additional Information

| | |
|------------------------------|--|
| Dilution | WB~~1:1000 IHC~~1:100~500 FC~~1:10~50 ICC~~N/A |
| Purification | Affinity-chromatography |
| Immunogen | A synthesized peptide derived from human IQGAP1 |
| Description | Binds to activated CDC42 but does not stimulate its GTPase activity. It associates with calmodulin. Could serve as an assembly scaffold for the organization of a multimolecular complex that would interface incoming signals to the reorganization of the actin cytoskeleton at the plasma membrane. |
| Storage Condition and Buffer | Rabbit IgG in phosphate buffered saline , pH 7.4, 150mM NaCl, 0.02% sodium azide and 50% glycerol. Store at +4°C short term. Store at -20°C long term. Avoid freeze / thaw cycle. |

IQGAP1 Antibody - Protein Information**Name** IQGAP1**Synonyms** KIAA0051**Function**

Plays a crucial role in regulating the dynamics and assembly of the actin cytoskeleton. Recruited to the cell cortex by interaction with ILK which allows it to cooperate with its effector DIAPH1 to locally stabilize microtubules and allow stable insertion of caveolae into the plasma membrane (By

similarity). Binds to activated CDC42 but does not stimulate its GTPase activity. Associates with calmodulin. May promote neurite outgrowth (PubMed:15695813). May play a possible role in cell cycle regulation by contributing to cell cycle progression after DNA replication arrest (PubMed:20883816).

Cellular Location

Cell membrane. Nucleus. Cytoplasm. Cytoplasm, cell cortex {ECO:0000250|UniProtKB:Q9JKF1}. Apical cell membrane. Basolateral cell membrane {ECO:0000250|UniProtKB:Q9JKF1}. Note=Subcellular distribution is regulated by the cell cycle, nuclear levels increase at G1/S phase (PubMed:20883816).

Tissue Location

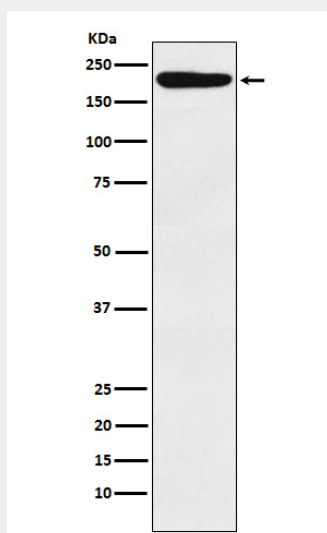
Expressed in the placenta, lung, and kidney (PubMed:8051149). A lower level expression is seen in the heart, liver, skeletal muscle and pancreas (PubMed:8051149)

IQGAP1 Antibody - Protocols

Provided below are standard protocols that you may find useful for product applications.

- [Western Blot](#)
- [Blocking Peptides](#)
- [Dot Blot](#)
- [Immunohistochemistry](#)
- [Immunofluorescence](#)
- [Immunoprecipitation](#)
- [Flow Cytometry](#)
- [Cell Culture](#)

IQGAP1 Antibody - Images



Western blot analysis of IQGAP1 expression in HeLa cell lysate.