

**SF2 Antibody**  
**Rabbit mAb**  
**Catalog # AP91597****Specification**

---

**SF2 Antibody - Product Information**

Application	WB, IHC, FC, ICC
Primary Accession	<a href="#">Q07955</a>
Reactivity	Rat
Clonality	Monoclonal
<b>Other Names</b>	
ASF; ASF1; SF2; SF2p33; SRp30a; SRSF1; SFRS1;	
Isotype	Rabbit IgG
Host	Rabbit
Calculated MW	27745 Da

**SF2 Antibody - Additional Information**

Dilution	WB~~1:1000 IHC~~1:100~500 FC~~1:10~50 ICC~~N/A
Purification	Affinity-chromatography
Immunogen	A synthesized peptide derived from human SF2
Description	Plays a role in preventing exon skipping, ensuring the accuracy of splicing and regulating alternative splicing. Interacts with other spliceosomal components, via the RS domains, to form a bridge between the 5'- and 3'-splice site binding components, U1 snRNP and U2AF.
Storage Condition and Buffer	Rabbit IgG in phosphate buffered saline , pH 7.4, 150mM NaCl, 0.02% sodium azide and 50% glycerol. Store at +4°C short term. Store at -20°C long term. Avoid freeze / thaw cycle.

**SF2 Antibody - Protein Information****Name** SRSF1 ([HGNC:10780](#))**Synonyms** ASF, SF2, SF2P33, SFRS1**Function**

Plays a role in preventing exon skipping, ensuring the accuracy of splicing and regulating alternative splicing. Interacts with other spliceosomal components, via the RS domains, to form a bridge between the 5'- and 3'-splice site binding components, U1 snRNP and U2AF. Can stimulate

binding of U1 snRNP to a 5'-splice site- containing pre-mRNA. Binds to purine-rich RNA sequences, either the octamer, 5'-RGAAGAAC-3' (r=A or G) or the decamers, AGGACAGAGC/AGGACGAAGC. Binds preferentially to the 5'-CGAGGCG-3' motif in vitro. Three copies of the octamer constitute a powerful splicing enhancer in vitro, the ASF/SF2 splicing enhancer (ASE) which can specifically activate ASE-dependent splicing. Isoform ASF-2 and isoform ASF-3 act as splicing repressors. May function as export adapter involved in mRNA nuclear export through the TAP/NXF1 pathway.

#### Cellular Location

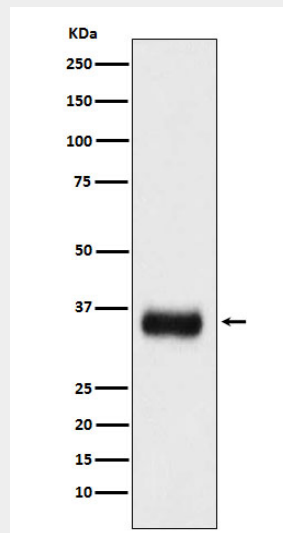
Cytoplasm. Nucleus speckle. Note=In nuclear speckles. Shuttles between the nucleus and the cytoplasm (PubMed:12215544, PubMed:20308322, PubMed:24449914, PubMed:9420331). Nuclear import is mediated via interaction with TNPO3 (PubMed:24449914).

#### SF2 Antibody - Protocols

Provided below are standard protocols that you may find useful for product applications.

- [Western Blot](#)
- [Blocking Peptides](#)
- [Dot Blot](#)
- [Immunohistochemistry](#)
- [Immunofluorescence](#)
- [Immunoprecipitation](#)
- [Flow Cytometry](#)
- [Cell Culture](#)

#### SF2 Antibody - Images



Western blot analysis of SF2 expression in mouse spleen lysate.