

**Klotho Antibody**  
**Rabbit mAb**  
**Catalog # AP91604**

## Specification

---

### Klotho Antibody - Product Information

Application	WB, IHC
Primary Accession	<a href="#">Q9UEF7</a>
Clonality	Monoclonal
<b>Other Names</b>	
KL; Klotho peptide;	
Isotype	Rabbit IgG
Host	Rabbit
Calculated MW	116181 Da

### Klotho Antibody - Additional Information

Dilution	WB~~1:1000 IHC~~1:100~500
Purification	Affinity-chromatography
Immunogen	A synthesized peptide derived from human Klotho
Description	May have weak glycosidase activity towards glucuronylated steroids. However, it lacks essential active site Glu residues at positions 239 and 872, suggesting it may be inactive as a glycosidase in vivo. May be involved in the regulation of calcium and phosphorus homeostasis by inhibiting the synthesis of active vitamin D (By similarity).
Storage Condition and Buffer	Rabbit IgG in phosphate buffered saline , pH 7.4, 150mM NaCl, 0.02% sodium azide and 50% glycerol. Store at +4°C short term. Store at -20°C long term. Avoid freeze / thaw cycle.

### Klotho Antibody - Protein Information

**Name** KL

#### **Function**

May have weak glycosidase activity towards glucuronylated steroids. However, it lacks essential active site Glu residues at positions 239 and 872, suggesting it may be inactive as a glycosidase in vivo. May be involved in the regulation of calcium and phosphorus homeostasis by inhibiting the synthesis of active vitamin D (By similarity). Essential factor for the specific interaction between FGF23 and FGFR1 (By similarity).

**Cellular Location**

[Isoform 1]: Cell membrane; Single-pass type I membrane protein. Apical cell membrane {ECO:0000250|UniProtKB:O35082}; Single-pass type I membrane protein {ECO:0000250|UniProtKB:O35082}. Note=Isoform 1 shedding leads to a soluble peptide. {ECO:0000250|UniProtKB:O35082} [Klotho peptide]: Secreted {ECO:0000250|UniProtKB:O35082}

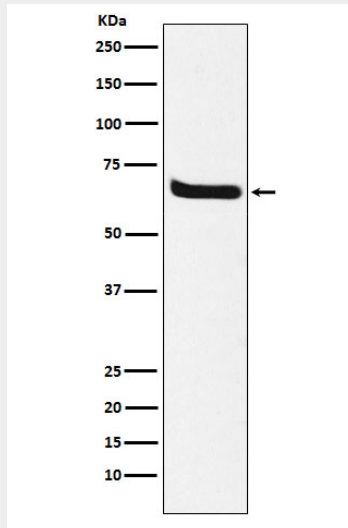
**Tissue Location**

Present in cortical renal tubules (at protein level). Soluble peptide is present in serum and cerebrospinal fluid Expressed in kidney, placenta, small intestine and prostate. Down- regulated in renal cell carcinomas, hepatocellular carcinomas, and in chronic renal failure kidney.

**Klotho Antibody - Protocols**

Provided below are standard protocols that you may find useful for product applications.

- [Western Blot](#)
- [Blocking Peptides](#)
- [Dot Blot](#)
- [Immunohistochemistry](#)
- [Immunofluorescence](#)
- [Immunoprecipitation](#)
- [Flow Cytometry](#)
- [Cell Culture](#)

**Klotho Antibody - Images**

Western blot analysis of Klotho expression in human fetal kidney lysate.