

SMYD3 Antibody
Rabbit mAb
Catalog # AP91606

Specification

SMYD3 Antibody - Product Information

Application	WB, IHC, FC, ICC, IP
Primary Accession	Q9H7B4
Reactivity	Rat
Clonality	Monoclonal
Other Names	
KMT3E; Smyd3; ZMYND1; ZNFN3A1;	

Isotype	Rabbit IgG
Host	Rabbit
Calculated MW	49097 Da

SMYD3 Antibody - Additional Information

Dilution	WB~~1:1000 IHC~~1:100~500 FC~~1:10~50 ICC~~N/A IP~~N/A
Purification	Affinity-chromatography
Immunogen	A synthesized peptide derived from human SMYD3
Description	Histone methyltransferase. Specifically methylates 'Lys-4' of histone H3, inducing di- and tri-methylation, but not monomethylation. Plays an important role in transcriptional activation as a member of an RNA polymerase complex. Binds DNA containing 5'-CCCTCC-3' or 5'-GAGGGG-3' sequences.
Storage Condition and Buffer	Rabbit IgG in phosphate buffered saline , pH 7.4, 150mM NaCl, 0.02% sodium azide and 50% glycerol. Store at +4°C short term. Store at -20°C long term. Avoid freeze / thaw cycle.

SMYD3 Antibody - Protein Information

Name SMYD3

Synonyms ZMYND1, ZNFN3A1

Function

Histone methyltransferase. Specifically methylates 'Lys-4' of histone H3, inducing di- and

tri-methylation, but not monomethylation (PubMed:15235609, PubMed:22419068). Also methylates 'Lys-5' of histone H4 (PubMed:22419068). Plays an important role in transcriptional activation as a member of an RNA polymerase complex (PubMed:15235609). Binds DNA containing 5'-CCCTCC-3' or 5'-GAGGGG-3' sequences (PubMed:15235609).

Cellular Location

Cytoplasm. Nucleus. Note=Mainly cytoplasmic when cells are arrested at G0/G1. Accumulates in the nucleus at S phase and G2/M.

Tissue Location

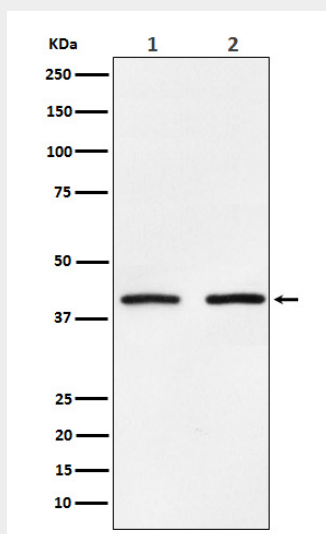
Expressed in skeletal muscles and testis. Overexpressed in a majority of colorectal and hepatocellular carcinomas.

SMYD3 Antibody - Protocols

Provided below are standard protocols that you may find useful for product applications.

- [Western Blot](#)
- [Blocking Peptides](#)
- [Dot Blot](#)
- [Immunohistochemistry](#)
- [Immunofluorescence](#)
- [Immunoprecipitation](#)
- [Flow Cytometry](#)
- [Cell Culture](#)

SMYD3 Antibody - Images



Western blot analysis of SMYD3 expression in (1) HeLa cell lysate; (2) NIH/3T3 cell lysate.