

**ZEB1 Antibody**  
**Rabbit mAb**  
**Catalog # AP91611****Specification**

---

**ZEB1 Antibody - Product Information**

Application	WB, IHC, FC, ICC
Primary Accession	<a href="#">P37275</a>
Clonality	Monoclonal
Other Names	
BZP; TCF8; AREB6; FECD6; NIL2A; PPCD3; ZFHEP; ZFH1A; DELTAEF1;	
Isotype	Rabbit IgG
Host	Rabbit
Calculated MW	124074 Da

**ZEB1 Antibody - Additional Information**

Dilution	WB~~1:1000 IHC~~1:100~500 FC~~1:10~50 ICC~~N/A
Purification	Affinity-chromatography
Immunogen	A synthesized peptide derived from human AREB6
Description	Inhibits interleukin-2 (IL-2) gene expression. May be responsible for transcriptional repression of the IL-2 gene. Enhances or represses the promoter activity of the ATP1A1 gene depending on the quantity of cDNA and on the cell type.
Storage Condition and Buffer	Rabbit IgG in phosphate buffered saline , pH 7.4, 150mM NaCl, 0.02% sodium azide and 50% glycerol. Store at +4°C short term. Store at -20°C long term. Avoid freeze / thaw cycle.

**ZEB1 Antibody - Protein Information****Name** ZEB1 ([HGNC:11642](#))**Function**

Acts as a transcriptional repressor. Inhibits interleukin-2 (IL-2) gene expression. Enhances or represses the promoter activity of the ATP1A1 gene depending on the quantity of cDNA and on the cell type. Represses E-cadherin promoter and induces an epithelial-mesenchymal transition (EMT) by recruiting SMARCA4/BRG1. Represses BCL6 transcription in the presence of the corepressor CTBP1. Positively regulates neuronal differentiation. Represses RCOR1 transcription activation during neurogenesis. Represses transcription by binding to the E box (5'-CANNTG-3'). In the absence of TGFB1, acts as a repressor of COL1A2 transcription via binding to the E-box in the

upstream enhancer region (By similarity).

### Cellular Location

Nucleus

### Tissue Location

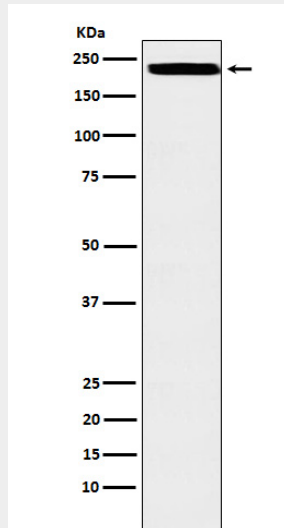
Colocalizes with SMARCA4/BRG1 in E-cadherin- negative cells from established lines, and stroma of normal colon as well as in de-differentiated epithelial cells at the invasion front of colorectal carcinomas (at protein level). Expressed in heart and skeletal muscle, but not in liver, spleen, or pancreas

## ZEB1 Antibody - Protocols

Provided below are standard protocols that you may find useful for product applications.

- [Western Blot](#)
- [Blocking Peptides](#)
- [Dot Blot](#)
- [Immunohistochemistry](#)
- [Immunofluorescence](#)
- [Immunoprecipitation](#)
- [Flow Cytometry](#)
- [Cell Culture](#)

## ZEB1 Antibody - Images



Western blot analysis of AREB6 expression in HEK293 cell lysate.