

MYBBP1A Antibody
Rabbit mAb
Catalog # AP91616**Specification**

MYBBP1A Antibody - Product Information

Application	WB, IHC, FC, ICC
Primary Accession	Q9BQG0
Clonality	Monoclonal
Other Names	
cb486; Mybbp1a; P160; p160MBP; p67MBP; PAP2; RP23 48A2.3;	
Isotype	Rabbit IgG
Host	Rabbit
Calculated MW	148855 Da

MYBBP1A Antibody - Additional Information

Dilution	WB~~1:1000 IHC~~1:100~500 FC~~1:10~50 ICC~~N/A
Purification	Affinity-chromatography
Immunogen	A synthesized peptide derived from human MYBBP1A
Description	May activate or repress transcription via interactions with sequence specific DNA-binding proteins. Repression may be mediated at least in part by histone deacetylase activity (HDAC activity).
Storage Condition and Buffer	Rabbit IgG in phosphate buffered saline , pH 7.4, 150mM NaCl, 0.02% sodium azide and 50% glycerol. Store at +4°C short term. Store at -20°C long term. Avoid freeze / thaw cycle.

MYBBP1A Antibody - Protein Information**Name** MYBBP1A**Synonyms** P160**Function**

May activate or repress transcription via interactions with sequence specific DNA-binding proteins (By similarity). Repression may be mediated at least in part by histone deacetylase activity (HDAC activity) (By similarity). Acts as a corepressor and in concert with CRY1, represses the transcription of the core circadian clock component PER2 (By similarity). Preferentially binds to dimethylated histone H3 'Lys-9' (H3K9me2) on the PER2 promoter (By similarity). Has a role in rRNA biogenesis together with PWP1 (PubMed:http://www.uniprot.org/citations/29065309"

target="_blank">29065309).

Cellular Location

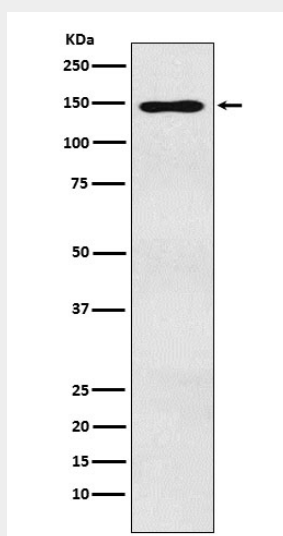
Cytoplasm. Nucleus. Nucleus, nucleolus. Note=Shuttles between the nucleus and cytoplasm. Nuclear import may be mediated by KPNA2, while export appears to depend partially on XPO1/CRM1 (By similarity). Predominantly nucleolar. {ECO:0000250|UniProtKB:Q7TPV4}

MYBBP1A Antibody - Protocols

Provided below are standard protocols that you may find useful for product applications.

- [Western Blot](#)
- [Blocking Peptides](#)
- [Dot Blot](#)
- [Immunohistochemistry](#)
- [Immunofluorescence](#)
- [Immunoprecipitation](#)
- [Flow Cytometry](#)
- [Cell Culture](#)

MYBBP1A Antibody - Images



Western blot analysis of MYBBP1A expression in HEK293 cell lysate.