

LYRIC Antibody
Rabbit mAb
Catalog # AP91617**Specification**

LYRIC Antibody - Product Information

Application	WB, IHC, ICC
Primary Accession	Q86UE4
Reactivity	Rat
Clonality	Monoclonal
Other Names	
3D3; 3D3/LYRIC; AEG1; Astrocyte elevated gene 1; LYRIC; LYRIC/3D3; Metadherin; MTDH; Protein LYRIC;	
Isotype	Rabbit IgG
Host	Rabbit
Calculated MW	63837 Da

LYRIC Antibody - Additional Information

Dilution	WB~~1:1000 IHC~~1:100~500 ICC~~N/A
Purification	Affinity-chromatography
Immunogen	A synthesized peptide derived from human LYRIC
Description	Downregulates SLC1A2/EAAT2 promoter activity when expressed ectopically. Activates the nuclear factor kappa-B (NF-kappa-B) transcription factor. Promotes anchorage-independent growth of immortalized melanocytes and astrocytes which is a key component in tumor cell expansion.
Storage Condition and Buffer	Rabbit IgG in phosphate buffered saline , pH 7.4, 150mM NaCl, 0.02% sodium azide and 50% glycerol. Store at +4°C short term. Store at -20°C long term. Avoid freeze / thaw cycle.

LYRIC Antibody - Protein Information**Name** MTDH**Synonyms** AEG1, LYRIC**Function**

Down-regulates SLC1A2/EAAT2 promoter activity when expressed ectopically. Activates the nuclear factor kappa-B (NF-kappa-B) transcription factor. Promotes anchorage-independent growth

of immortalized melanocytes and astrocytes which is a key component in tumor cell expansion. Promotes lung metastasis and also has an effect on bone and brain metastasis, possibly by enhancing the seeding of tumor cells to the target organ endothelium. Induces chemoresistance.

Cellular Location

Endoplasmic reticulum membrane; Single-pass membrane protein. Nucleus membrane; Single-pass membrane protein. Cell junction, tight junction Nucleus, nucleolus. Cytoplasm, perinuclear region Note=In epithelial cells, recruited to tight junctions (TJ) during the maturation of the TJ complexes. A nucleolar staining may be due to nuclear targeting of an isoform lacking the transmembrane domain (By similarity). TNF-alpha causes translocation from the cytoplasm to the nucleus.

Tissue Location

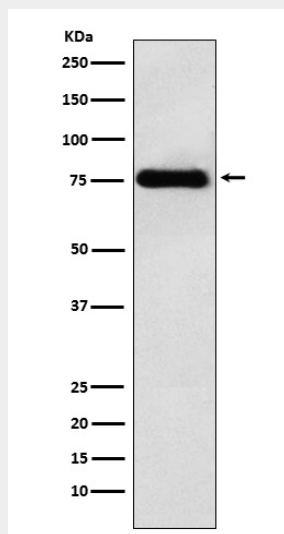
Widely expressed with highest levels in muscle- dominating organs such as skeletal muscle, heart, tongue and small intestine and in endocrine glands such as thyroid and adrenal gland Overexpressed in various cancers including breast, brain, prostate, melanoma and glioblastoma multiforme.

LYRIC Antibody - Protocols

Provided below are standard protocols that you may find useful for product applications.

- [Western Blot](#)
- [Blocking Peptides](#)
- [Dot Blot](#)
- [Immunohistochemistry](#)
- [Immunofluorescence](#)
- [Immunoprecipitation](#)
- [Flow Cytometry](#)
- [Cell Culture](#)

LYRIC Antibody - Images



Western blot analysis of LYRIC expression in HeLa cell lysate.