

KSR1 Antibody
Rabbit mAb
Catalog # AP91622**Specification**

KSR1 Antibody - Product Information

Application	WB, IHC
Primary Accession	Q8IVT5
Reactivity	Rat
Clonality	Monoclonal
Other Names	
BKSR1; dKsr; EK31; KSR; KSR1; RSU2; SR31;	
Isotype	Rabbit IgG
Host	Rabbit
Calculated MW	102160 Da

KSR1 Antibody - Additional Information

Dilution	WB~~1:1000 IHC~~1:100~500
Purification	Affinity-chromatography
Immunogen	A synthesized peptide derived from human KSR1
Description	Location-regulated scaffolding protein connecting MEK to RAF. Promotes MEK and RAF phosphorylation and activity through assembly of an activated signaling complex. By itself, it has no demonstrated kinase activity.
Storage Condition and Buffer	Rabbit IgG in phosphate buffered saline , pH 7.4, 150mM NaCl, 0.02% sodium azide and 50% glycerol. Store at +4°C short term. Store at -20°C long term. Avoid freeze / thaw cycle.

KSR1 Antibody - Protein Information**Name** KSR1**Synonyms** KSR**Function**

Part of a multiprotein signaling complex which promotes phosphorylation of Raf family members and activation of downstream MAP kinases (By similarity). Independently of its kinase activity, acts as MAP2K1/MEK1 and MAP2K2/MEK2-dependent allosteric activator of BRAF; upon binding to MAP2K1/MEK1 or MAP2K2/MEK2, dimerizes with BRAF and promotes BRAF-mediated phosphorylation of MAP2K1/MEK1 and/or MAP2K2/MEK2 (PubMed:29433126). Promotes

activation of MAPK1 and/or MAPK3, both in response to EGF and to cAMP (By similarity). Its kinase activity is unsure (By similarity). Some protein kinase activity has been detected in vitro, however the physiological relevance of this activity is unknown (By similarity).

Cellular Location

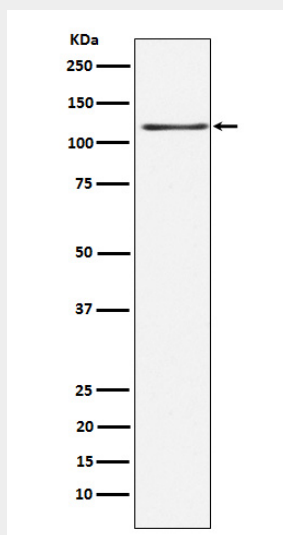
Cytoplasm. Membrane; Peripheral membrane protein. Cell membrane {ECO:0000250|UniProtKB:Q61097}; Peripheral membrane protein {ECO:0000250|UniProtKB:Q61097}. Cell projection, ruffle membrane {ECO:0000250|UniProtKB:Q61097}. Endoplasmic reticulum membrane. Note=In unstimulated cells, where the phosphorylated form is bound to a 14-3-3 protein, sequestration in the cytoplasm occurs. Following growth factor treatment, the protein is free for membrane translocation, and it moves from the cytoplasm to the cell periphery.

KSR1 Antibody - Protocols

Provided below are standard protocols that you may find useful for product applications.

- [Western Blot](#)
- [Blocking Peptides](#)
- [Dot Blot](#)
- [Immunohistochemistry](#)
- [Immunofluorescence](#)
- [Immunoprecipitation](#)
- [Flow Cytometry](#)
- [Cell Culture](#)

KSR1 Antibody - Images



Western blot analysis of KSR1 expression in HEK293 cell lysate.