

STIP1 Antibody
Rabbit mAb
Catalog # AP91624

Specification

STIP1 Antibody - Product Information

Application	WB, IHC, FC, ICC, IP
Primary Accession	P31948
Reactivity	Rat
Clonality	Monoclonal
Other Names	
Hop; P60; STI1; STI1L; STIP1; Stress induced phosphoprotein 1;	
Isotype	Rabbit IgG
Host	Rabbit
Calculated MW	62639 Da

STIP1 Antibody - Additional Information

Dilution	WB~~1:1000 IHC~~1:100~500 FC~~1:10~50 ICC~~N/A IP~~N/A
Purification	Affinity-chromatography
Immunogen	A synthesized peptide derived from human STIP1
Description	Mediates the association of the molecular chaperones HSC70 and HSP90 (HSPCA and HSPCB).
Storage Condition and Buffer	Rabbit IgG in phosphate buffered saline , pH 7.4, 150mM NaCl, 0.02% sodium azide and 50% glycerol. Store at +4°C short term. Store at -20°C long term. Avoid freeze / thaw cycle.

STIP1 Antibody - Protein Information

Name STIP1 ([HGNC:11387](#))

Function

Acts as a co-chaperone for HSP90AA1 (PubMed:27353360). Mediates the association of the molecular chaperones HSPA8/HSC70 and HSP90 (By similarity).

Cellular Location

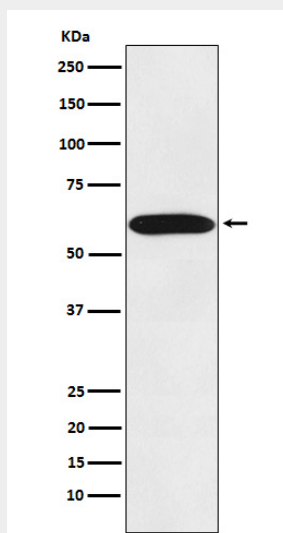
Cytoplasm {ECO:0000250|UniProtKB:Q60864}. Nucleus {ECO:0000250|UniProtKB:Q60864}. Dynein axonemal particle {ECO:0000250|UniProtKB:Q7ZWU1}

STIP1 Antibody - Protocols

Provided below are standard protocols that you may find useful for product applications.

- [Western Blot](#)
- [Blocking Peptides](#)
- [Dot Blot](#)
- [Immunohistochemistry](#)
- [Immunofluorescence](#)
- [Immunoprecipitation](#)
- [Flow Cytometry](#)
- [Cell Culture](#)

STIP1 Antibody - Images



Western blot analysis of STIP1 expression in Jurkat cell lysate.