

**GLP2 Antibody**  
**Rabbit mAb**  
**Catalog # AP91630****Specification**

---

**GLP2 Antibody - Product Information**

Application	WB
Primary Accession	<a href="#">P01275</a>
Clonality	Monoclonal
<b>Other Names</b>	
GCG; GLP 2; GRPP;	
Isotype	Rabbit IgG
Host	Rabbit
Calculated MW	20909 Da

**GLP2 Antibody - Additional Information**

Dilution	WB~~1:1000
Purification	Affinity-chromatography
Immunogen	A synthesized peptide derived from human GLP2
Description	Human GLP2 (glucagon like peptide 2) is a peptide hormone of the glucagon family produced by the L cells of the intestinal mucosa and originates from the same prohormone as glucagon.
Storage Condition and Buffer	Rabbit IgG in phosphate buffered saline , pH 7.4, 150mM NaCl, 0.02% sodium azide and 50% glycerol. Store at +4°C short term. Store at -20°C long term. Avoid freeze / thaw cycle.

**GLP2 Antibody - Protein Information****Name** GCG ([HGNC:4191](#))**Function**

[Glucagon]: Plays a key role in glucose metabolism and homeostasis. Regulates blood glucose by increasing gluconeogenesis and decreasing glycolysis. A counterregulatory hormone of insulin, raises plasma glucose levels in response to insulin-induced hypoglycemia. Plays an important role in initiating and maintaining hyperglycemic conditions in diabetes.

**Cellular Location**

Secreted.

**Tissue Location**

[Glucagon]: Secreted in the A cells of the islets of Langerhans. [Glucagon-like peptide 2]: Secreted from enteroendocrine cells throughout the gastrointestinal tract. Also secreted in selected neurons

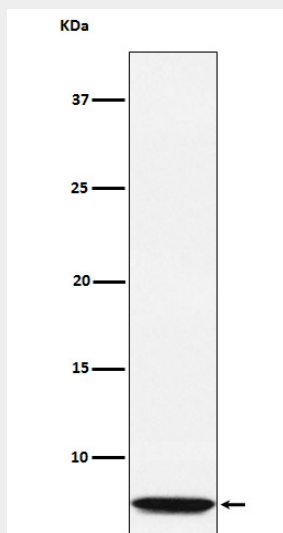
in the brain [Oxyntomodulin]: Secreted from enteroendocrine cells throughout the gastrointestinal tract

## GLP2 Antibody - Protocols

Provided below are standard protocols that you may find useful for product applications.

- [Western Blot](#)
- [Blocking Peptides](#)
- [Dot Blot](#)
- [Immunohistochemistry](#)
- [Immunofluorescence](#)
- [Immunoprecipitation](#)
- [Flow Cytometry](#)
- [Cell Culture](#)

## GLP2 Antibody - Images



Western blot analysis of GLP2 expression in GLP2 recombinant protein lysate.