

Epac1 Antibody
Rabbit mAb
Catalog # AP91631**Specification**

Epac1 Antibody - Product Information

Application	WB, IHC, ICC, IP
Primary Accession	O95398
Reactivity	Rat
Clonality	Monoclonal
Other Names	
CAMP-GEFI; EPAC; EPAC1; HSU79275; bcm910;	
Isotype	Rabbit IgG
Host	Rabbit
Calculated MW	103751 Da

Epac1 Antibody - Additional Information

Dilution	WB~~1:1000 IHC~~1:100~500 ICC~~N/A IP~~N/A
Purification	Affinity-chromatography
Immunogen	A synthesized peptide derived from human Epac1
Description	The activation of RaP1 by cAMP is independent of PKA and is mediated by recently discovered family of guanine nucleotide exchange factors (GEFs) called cAMP-GEFs or Epacs. The Epac signaling therefore represents a novel mechanism for cAMP signaling with in the cAMP cascade.
Storage Condition and Buffer	Rabbit IgG in phosphate buffered saline , pH 7.4, 150mM NaCl, 0.02% sodium azide and 50% glycerol. Store at +4°C short term. Store at -20°C long term. Avoid freeze / thaw cycle.

Epac1 Antibody - Protein Information**Name** RAPGEF3**Synonyms** CGEF1, EPAC, EPAC1**Function**

Guanine nucleotide exchange factor (GEF) for RAP1A and RAP2A small GTPases that is activated by binding cAMP. Through simultaneous binding of PDE3B to RAPGEF3 and PIK3R6 is assembled in

a signaling complex in which it activates the PI3K gamma complex and which is involved in angiogenesis. Plays a role in the modulation of the cAMP- induced dynamic control of endothelial barrier function through a pathway that is independent on Rho-mediated signaling. Required for the actin rearrangement at cell-cell junctions, such as stress fibers and junctional actin.

Cellular Location

Endomembrane system

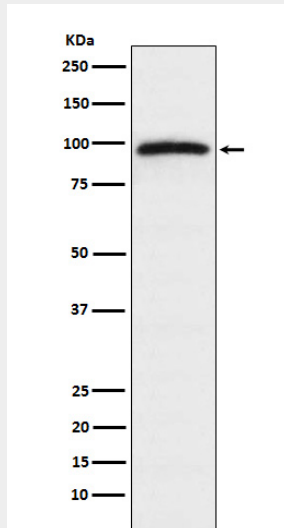
Tissue Location

Widely expressed with highest levels in adult kidney, heart, thyroid and brain, and fetal kidney

Epac1 Antibody - Protocols

Provided below are standard protocols that you may find useful for product applications.

- [Western Blot](#)
- [Blocking Peptides](#)
- [Dot Blot](#)
- [Immunohistochemistry](#)
- [Immunofluorescence](#)
- [Immunoprecipitation](#)
- [Flow Cytometry](#)
- [Cell Culture](#)

Epac1 Antibody - Images

Western blot analysis of Epac1 expression in HeLa cell lysate.