

**GCLM Antibody**  
Rabbit mAb  
Catalog # AP91632

## Specification

---

### GCLM Antibody - Product Information

Application	WB, IHC, FC, ICC, IP
Primary Accession	<a href="#">P48507</a>
Reactivity	Rat
Clonality	Monoclonal
<b>Other Names</b>	
GCLM; GCS light chain; GLCLR; Glutamate cysteine ligase regulatory subunit;	
Isotype	Rabbit IgG
Host	Rabbit
Calculated MW	30727 Da

### GCLM Antibody - Additional Information

Dilution	WB~~1:1000 IHC~~1:100~500 FC~~1:10~50 ICC~~N/A IP~~N/A
Purification	Affinity-chromatography
Immunogen	A synthesized peptide derived from human GCLM
Description	Sulfur metabolism; glutathione biosynthesis; glutathione from L-cysteine and L-glutamate: step 1/2.
Storage Condition and Buffer	Rabbit IgG in phosphate buffered saline , pH 7.4, 150mM NaCl, 0.02% sodium azide and 50% glycerol. Store at +4°C short term. Store at -20°C long term. Avoid freeze / thaw cycle.

### GCLM Antibody - Protein Information

**Name** GCLM

**Synonyms** GLCLR

**Tissue Location**

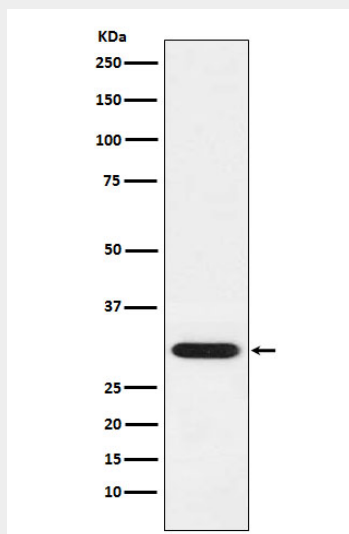
In all tissues examined. Highest levels in skeletal muscle

### GCLM Antibody - Protocols

Provided below are standard protocols that you may find useful for product applications.

- [Western Blot](#)
- [Blocking Peptides](#)
- [Dot Blot](#)
- [Immunohistochemistry](#)
- [Immunofluorescence](#)
- [Immunoprecipitation](#)
- [Flow Cytometry](#)
- [Cell Culture](#)

#### **GCLM Antibody - Images**



Western blot analysis of GCLM expression in K562 cell lysate.