

**MVP Antibody**  
**Rabbit mAb**  
**Catalog # AP91641**

## Specification

---

### MVP Antibody - Product Information

Application	WB, IHC
Primary Accession	<a href="#">Q14764</a>
Reactivity	Rat
Clonality	Monoclonal
<b>Other Names</b>	
LRP; MVP; VAULT1;	
Isotype	Rabbit IgG
Host	Rabbit
Calculated MW	99327 Da

### MVP Antibody - Additional Information

Dilution	WB~~1:1000 IHC~~1:100~500
Purification	Affinity-chromatography
Immunogen	A synthesized peptide derived from human MVP
Description	Required for normal vault structure. Vaults are multi-subunit structures that may act as scaffolds for proteins involved in signal transduction. Vaults may also play a role in nucleocytoplasmic transport.
Storage Condition and Buffer	Rabbit IgG in phosphate buffered saline , pH 7.4, 150mM NaCl, 0.02% sodium azide and 50% glycerol. Store at +4°C short term. Store at -20°C long term. Avoid freeze / thaw cycle.

### MVP Antibody - Protein Information

**Name** MVP

**Synonyms** LRP

#### Function

Required for normal vault structure. Vaults are multi-subunit structures that may act as scaffolds for proteins involved in signal transduction. Vaults may also play a role in nucleocytoplasmic transport. Down-regulates IFNG-mediated STAT1 signaling and subsequent activation of JAK. Down-regulates SRC activity and signaling through MAP kinases.

#### Cellular Location

Cytoplasm. Nucleus, nuclear pore complex. Cytoplasm, perinuclear region. Note=5% found in the

nuclear pore complex (PubMed:15133037). Translocates from the nucleus to the cytoplasm upon EGF treatment (PubMed:16441665)

#### **Tissue Location**

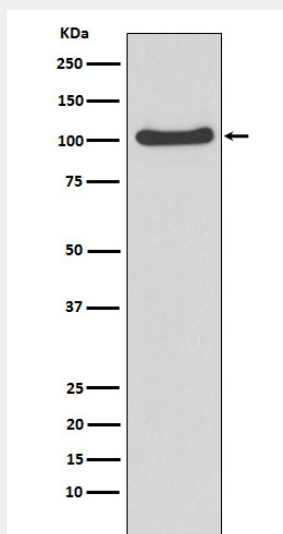
Present in most normal tissues. Higher expression observed in epithelial cells with secretory and excretory functions, as well as in cells chronically exposed to xenobiotics, such as bronchial cells and cells lining the intestine. Overexpressed in many multidrug-resistant cancer cells

#### **MVP Antibody - Protocols**

Provided below are standard protocols that you may find useful for product applications.

- [Western Blot](#)
- [Blocking Peptides](#)
- [Dot Blot](#)
- [Immunohistochemistry](#)
- [Immunofluorescence](#)
- [Immunoprecipitation](#)
- [Flow Cytometry](#)
- [Cell Culture](#)

#### **MVP Antibody - Images**



Western blot analysis of MVP expression in A549 cell lysate.