

DDAH1 Antibody
Rabbit mAb
Catalog # AP91642

Specification

DDAH1 Antibody - Product Information

Application	WB, IHC, FC, ICC, IP
Primary Accession	O94760
Clonality	Monoclonal
Other Names	
DDAH; DDAH I; DDAH1; DDAH1; Dimethylargininase 1;	

Isotype	Rabbit IgG
Host	Rabbit
Calculated MW	31122 Da

DDAH1 Antibody - Additional Information

Dilution	WB~~1:1000 IHC~~1:100~500 FC~~1:10~50 ICC~~N/A IP~~N/A
Purification	Affinity-chromatography
Immunogen	A synthesized peptide derived from human DDAH1
Description	Hydrolyzes N(G),N(G)-dimethyl-L-arginine (ADMA) and N(G)-monomethyl-L-arginine (MMA) which act as inhibitors of NOS. Has therefore a role in the regulation of nitric oxide generation.
Storage Condition and Buffer	Rabbit IgG in phosphate buffered saline , pH 7.4, 150mM NaCl, 0.02% sodium azide and 50% glycerol. Store at +4°C short term. Store at -20°C long term. Avoid freeze / thaw cycle.

DDAH1 Antibody - Protein Information

Name DDAH1 ([HGNC:2715](#))

Synonyms DDAH

Function

Hydrolyzes N(G),N(G)-dimethyl-L-arginine (ADMA) and N(G)- monomethyl-L-arginine (MMA) which act as inhibitors of NOS. Has therefore a role in the regulation of nitric oxide generation.

Tissue Location

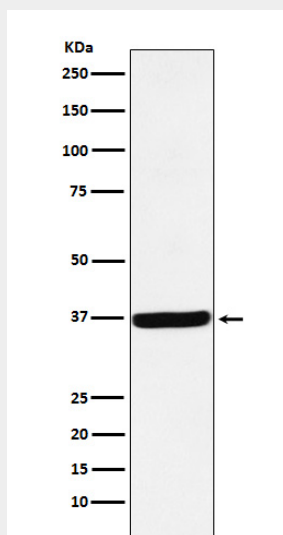
Detected in brain, liver, kidney and pancreas, and at low levels in skeletal muscle.

DDAH1 Antibody - Protocols

Provided below are standard protocols that you may find useful for product applications.

- [Western Blot](#)
- [Blocking Peptides](#)
- [Dot Blot](#)
- [Immunohistochemistry](#)
- [Immunofluorescence](#)
- [Immunoprecipitation](#)
- [Flow Cytometry](#)
- [Cell Culture](#)

DDAH1 Antibody - Images



Western blot analysis of DDAH1 expression in 293 cell lysate.