

ALIX Antibody
Rabbit mAb
Catalog # AP91645**Specification**

ALIX Antibody - Product Information

Application	WB, FC
Primary Accession	Q8WUM4
Reactivity	Rat
Clonality	Monoclonal
Other Names	
AIP1; Alix; DRIP4; Hp95; PDCD6IP;	
Isotype	Rabbit IgG
Host	Rabbit
Calculated MW	96023 Da

ALIX Antibody - Additional Information

Dilution	WB~~1:1000 FC~~1:10~50
Purification	Affinity-chromatography
Immunogen	A synthesized peptide derived from human ALIX
Description	Class E VPS protein involved in concentration and sorting of cargo proteins of the multivesicular body (MVB) for incorporation into intraluminal vesicles (ILVs) that are generated by invagination and scission from the limiting membrane of the endosome.
Storage Condition and Buffer	Rabbit IgG in phosphate buffered saline , pH 7.4, 150mM NaCl, 0.02% sodium azide and 50% glycerol. Store at +4°C short term. Store at -20°C long term. Avoid freeze / thaw cycle.

ALIX Antibody - Protein Information**Name** PDCD6IP ([HGNC:8766](#))**Synonyms** AIP1, ALIX, KIAA1375**Function**

Multifunctional protein involved in endocytosis, multivesicular body biogenesis, membrane repair, cytokinesis, apoptosis and maintenance of tight junction integrity. Class E VPS protein involved in concentration and sorting of cargo proteins of the multivesicular body (MVB) for incorporation into intraluminal vesicles (ILVs) that are generated by invagination and scission from the limiting membrane of the endosome. Binds to the phospholipid lysobisphosphatidic acid (LBPA) which is

abundant in MVBs internal membranes. The MVB pathway requires the sequential function of ESCRT-O, -I, -II and -III complexes (PubMed:14739459). The ESCRT machinery also functions in topologically equivalent membrane fission events, such as the terminal stages of cytokinesis (PubMed:17556548, PubMed:17853893). Adapter for a subset of ESCRT-III proteins, such as CHMP4, to function at distinct membranes. Required for completion of cytokinesis (PubMed:17556548, PubMed:17853893, PubMed:18641129). May play a role in the regulation of both apoptosis and cell proliferation. Regulates exosome biogenesis in concert with SDC1/4 and SDCBP (PubMed:22660413). By interacting with F-actin, PARD3 and TJP1 secures the proper assembly and positioning of actomyosin-tight junction complex at the apical sides of adjacent epithelial cells that defines a spatial membrane domain essential for the maintenance of epithelial cell polarity and barrier (By similarity).

Cellular Location

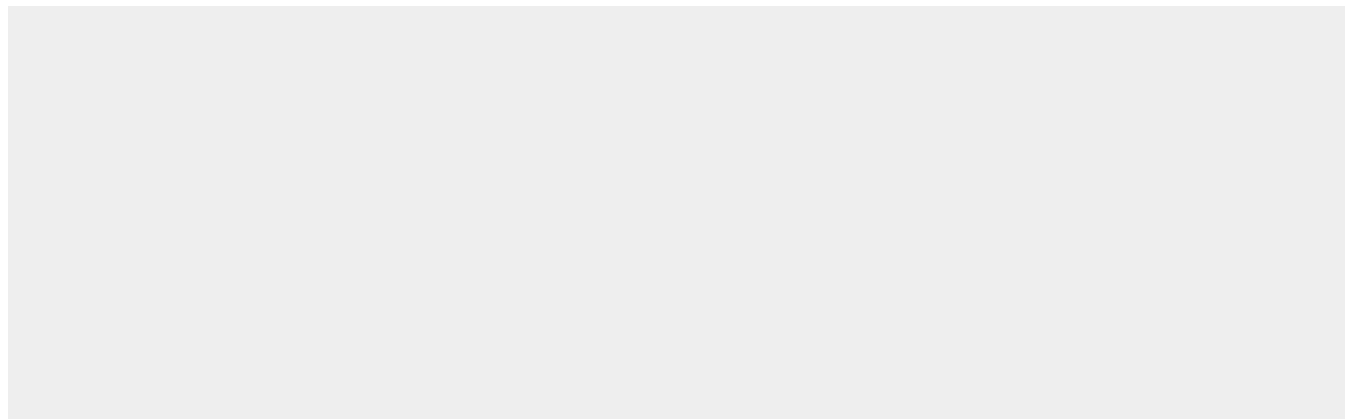
Cytoplasm, cytosol {ECO:0000250|UniProtKB:Q9QZA2}. Melanosome. Cytoplasm, cytoskeleton, microtubule organizing center, centrosome. Secreted, extracellular exosome. Cell junction, tight junction {ECO:0000250|UniProtKB:Q9WU78}. Midbody, Midbody ring Note=Identified by mass spectrometry in melanosome fractions from stage I to stage IV. Colocalized with CEP55 at centrosomes of non-dividing cells. Component of the actomyosin-tight junction complex (By similarity). PDCD6IP targeting to the midbody requires the interaction with CEP55 (PubMed:18641129). {ECO:0000250|UniProtKB:Q9QZA2, ECO:0000250|UniProtKB:Q9WU78, ECO:0000269|PubMed:17081065, ECO:0000269|PubMed:17556548, ECO:0000269|PubMed:17853893, ECO:0000269|PubMed:18641129}

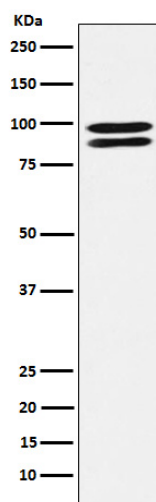
ALIX Antibody - Protocols

Provided below are standard protocols that you may find useful for product applications.

- [Western Blot](#)
- [Blocking Peptides](#)
- [Dot Blot](#)
- [Immunohistochemistry](#)
- [Immunofluorescence](#)
- [Immunoprecipitation](#)
- [Flow Cytometry](#)
- [Cell Culture](#)

ALIX Antibody - Images





Western blot analysis of ALIX expression in K562 cell lysate.