

HIST1H1C Antibody (Center)
Affinity Purified Rabbit Polyclonal Antibody (Pab)
Catalog # AP9164c**Specification**

HIST1H1C Antibody (Center) - Product Information

Application	WB,E
Primary Accession	P16403
Reactivity	Human
Host	Rabbit
Clonality	Polyclonal
Isotype	Rabbit IgG
Calculated MW	21365
Antigen Region	105-131

HIST1H1C Antibody (Center) - Additional Information**Gene ID** 3006**Other Names**

Histone H12, Histone H1c, Histone H1d, Histone H1s-1, HIST1H1C, H1F2

Target/Specificity

This HIST1H1C antibody is generated from rabbits immunized with a KLH conjugated synthetic peptide between 105-131 amino acids from the Central region of human HIST1H1C.

Dilution

WB~~1:2000

E~~Use at an assay dependent concentration.

Format

Purified polyclonal antibody supplied in PBS with 0.09% (W/V) sodium azide. This antibody is purified through a protein A column, followed by peptide affinity purification.

Storage

Maintain refrigerated at 2-8°C for up to 2 weeks. For long term storage store at -20°C in small aliquots to prevent freeze-thaw cycles.

Precautions

HIST1H1C Antibody (Center) is for research use only and not for use in diagnostic or therapeutic procedures.

HIST1H1C Antibody (Center) - Protein Information**Name** H1-2 ([HGNC:4716](#))

Function Histone H1 protein binds to linker DNA between nucleosomes forming the macromolecular structure known as the chromatin fiber. Histones H1 are necessary for the

condensation of nucleosome chains into higher-order structured fibers. Also acts as a regulator of individual gene transcription through chromatin remodeling, nucleosome spacing and DNA methylation (By similarity).

Cellular Location

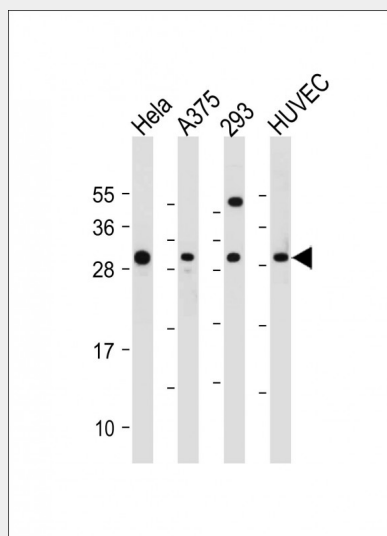
Nucleus. Chromosome. Note=Mainly localizes in euchromatin. Distribution goes in parallel with DNA concentration

HIST1H1C Antibody (Center) - Protocols

Provided below are standard protocols that you may find useful for product applications.

- [Western Blot](#)
- [Blocking Peptides](#)
- [Dot Blot](#)
- [Immunohistochemistry](#)
- [Immunofluorescence](#)
- [Immunoprecipitation](#)
- [Flow Cytometry](#)
- [Cell Culture](#)

HIST1H1C Antibody (Center) - Images



All lanes : Anti-HIST1H1C Antibody (Center) at 1:2000 dilution Lane 1: HeLa whole cell lysate Lane 2: A375 whole cell lysate Lane 3: 293 whole cell lysate Lane 4: HUVEC whole cell lysate Lysates/proteins at 20 µg per lane. Secondary Goat Anti-Rabbit IgG, (H+L), Peroxidase conjugated at 1/10000 dilution. Predicted band size : 21 kDa Blocking/Dilution buffer: 5% NFDM/TBST.

HIST1H1C Antibody (Center) - Background

Histones H1 are necessary for the condensation of nucleosome chains into higher order structures.

HIST1H1C Antibody (Center) - References

Mayya V., et.al., Sci. Signal. 2:RA46-RA46(2009).