

PDE4D Antibody
Rabbit mAb
Catalog # AP91660**Specification**

PDE4D Antibody - Product Information

Application	WB
Primary Accession	Q08499
Clonality	Monoclonal
Other Names	
DPDE3; HSPDE4D; PDE43; Pde4d; PDE4DN2; STRK1;	
Isotype	Rabbit IgG
Host	Rabbit
Calculated MW	91115 Da

PDE4D Antibody - Additional Information

Purification	Affinity-chromatography
Immunogen	A synthesized peptide derived from human PDE4D
Description	Hydrolyzes the second messenger cAMP, which is a key regulator of many important physiological processes.
Storage Condition and Buffer	Rabbit IgG in phosphate buffered saline , pH 7.4, 150mM NaCl, 0.02% sodium azide and 50% glycerol. Store at +4°C short term. Store at -20°C long term. Avoid freeze / thaw cycle.

PDE4D Antibody - Protein Information**Name** PDE4D ([HGNC:8783](#))**Synonyms** DPDE3**Function**

Hydrolyzes the second messenger cAMP, which is a key regulator of many important physiological processes.

Cellular Location

Apical cell membrane. Cytoplasm. Membrane. Cytoplasm, cytoskeleton. Cytoplasm, cytoskeleton, microtubule organizing center, centrosome Note=Found in the soluble fraction, associated with membranes, and associated with the cytoskeleton and the centrosome (By similarity) Colocalized with SHANK2 to the apical membrane of colonic crypt cells

Tissue Location

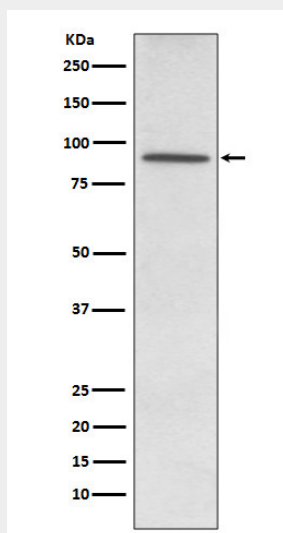
Expressed in colonic epithelial cells (at protein level). Widespread; most abundant in skeletal muscle [Isoform 8]: Detected in brain, placenta, lung and kidney.

PDE4D Antibody - Protocols

Provided below are standard protocols that you may find useful for product applications.

- [Western Blot](#)
- [Blocking Peptides](#)
- [Dot Blot](#)
- [Immunohistochemistry](#)
- [Immunofluorescence](#)
- [Immunoprecipitation](#)
- [Flow Cytometry](#)
- [Cell Culture](#)

PDE4D Antibody - Images



Western blot analysis of PDE4D expression in K562 cell lysate.