

PFDN5 Antibody
Rabbit mAb
Catalog # AP91661

Specification

PFDN5 Antibody - Product Information

Application **WB, IHC, IP**
Primary Accession [Q99471](#)
Reactivity **Rat**
Clonality **Monoclonal**

Other Names

EIG 1; Eig1; MM1; PFD5; PFDN5; Prefoldin 5;

Isotype **Rabbit IgG**
Host **Rabbit**
Calculated MW **17328 Da**

PFDN5 Antibody - Additional Information

Dilution **WB~~1:1000**
IHC~~1:100~500
IP~~N/A

Purification **Affinity-chromatography**
Immunogen **A synthesized peptide derived from human PFDN5**

Description **Binds specifically to cytosolic chaperonin (c-CPN) and transfers target proteins to it. Binds to nascent polypeptide chain and promotes folding in an environment in which there are many competing pathways for nonnative proteins.**

Storage Condition and Buffer **Rabbit IgG in phosphate buffered saline , pH 7.4, 150mM NaCl, 0.02% sodium azide and 50% glycerol. Store at +4°C short term. Store at -20°C long term. Avoid freeze / thaw cycle.**

PFDN5 Antibody - Protein Information

Name PFDN5

Synonyms MM1, PFD5

Function

Binds specifically to cytosolic chaperonin (c-CPN) and transfers target proteins to it. Binds to nascent polypeptide chain and promotes folding in an environment in which there are many competing pathways for nonnative proteins. Represses the transcriptional activity of MYC.

Cellular Location

[Isoform 1]: Nucleus. [Isoform 3]: Nucleus.

Tissue Location

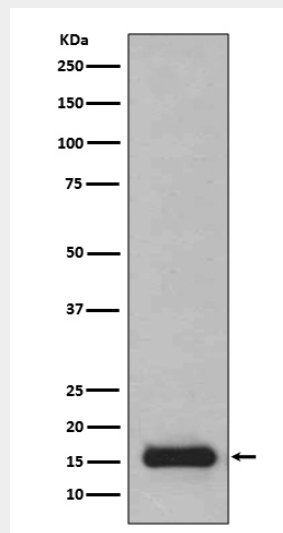
Highly expressed in pancreas and skeletal muscle and moderately in other tissues

PFDN5 Antibody - Protocols

Provided below are standard protocols that you may find useful for product applications.

- [Western Blot](#)
- [Blocking Peptides](#)
- [Dot Blot](#)
- [Immunohistochemistry](#)
- [Immunofluorescence](#)
- [Immunoprecipitation](#)
- [Flow Cytometry](#)
- [Cell Culture](#)

PFDN5 Antibody - Images



Western blot analysis of PFDN5 expression in 293T cell lysate.