

Calmegin Antibody
Rabbit mAb
Catalog # AP91670**Specification**

Calmegin Antibody - Product Information

| | |
|--|------------------------|
| Application | WB, IHC, ICC, IP |
| Primary Accession | O14967 |
| Reactivity | Rat |
| Clonality | Monoclonal |
| Other Names | |
| CLGN; MEG 1 antigen; Calnexin-T; Calmegin precursor; Calmegin; | |

| | |
|---------------|------------|
| Isotype | Rabbit IgG |
| Host | Rabbit |
| Calculated MW | 70039 Da |

Calmegin Antibody - Additional Information

| | |
|------------------------------|--|
| Dilution | WB~~1:1000 IHC~~1:100~500 ICC~~N/A IP~~N/A |
| Purification | Affinity-chromatography |
| Immunogen | A synthesized peptide derived from human Calmegin |
| Description | Functions during spermatogenesis as a chaperone for a range of client proteins that are important for sperm adhesion onto the egg zona pellucida and for subsequent penetration of the zona pellucida. Required for normal sperm migration from the uterus into the oviduct. Required for normal male fertility. Binds calcium ions (By similarity). |
| Storage Condition and Buffer | Rabbit IgG in phosphate buffered saline , pH 7.4, 150mM NaCl, 0.02% sodium azide and 50% glycerol. Store at +4°C short term. Store at -20°C long term. Avoid freeze / thaw cycle. |

Calmegin Antibody - Protein Information**Name** CLGN**Function**

Functions during spermatogenesis as a chaperone for a range of client proteins that are important for sperm adhesion onto the egg zona pellucida and for subsequent penetration of the zona pellucida. Required for normal sperm migration from the uterus into the oviduct. Required for

normal male fertility. Binds calcium ions (By similarity).

Cellular Location

Endoplasmic reticulum membrane; Single-pass type I membrane protein

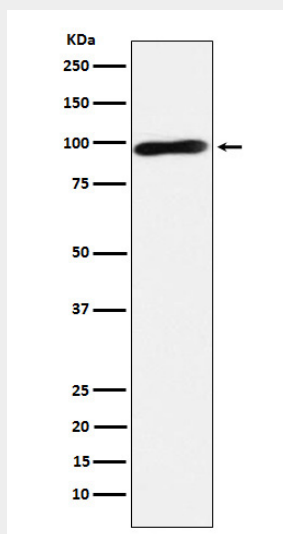
Tissue Location

Detected in testis (at protein level). Detected in testis.

Calmegin Antibody - Protocols

Provided below are standard protocols that you may find useful for product applications.

- [Western Blot](#)
- [Blocking Peptides](#)
- [Dot Blot](#)
- [Immunohistochemistry](#)
- [Immunofluorescence](#)
- [Immunoprecipitation](#)
- [Flow Cytometry](#)
- [Cell Culture](#)

Calmegin Antibody - Images

Western blot analysis of Calmegin expression in Jurkat cell lysate.