

alpha Internexin Antibody
Rabbit mAb
Catalog # AP91684**Specification**

alpha Internexin Antibody - Product Information

| | |
|---------------------------|------------------------|
| Application | WB, IHC, FC, ICC, IP |
| Primary Accession | Q16352 |
| Reactivity | Rat |
| Clonality | Monoclonal |
| Other Names | |
| INA; NEF5; NF-66; TXBP-1; | |
| Isotype | Rabbit IgG |
| Host | Rabbit |
| Calculated MW | 55391 Da |

alpha Internexin Antibody - Additional Information

| | |
|------------------------------|--|
| Dilution | WB~~1:1000 IHC~~1:100~500 FC~~1:10~50 ICC~~N/A IP~~N/A |
| Purification | Affinity-chromatography |
| Immunogen | A synthesized peptide derived from human alpha Internexin |
| Description | Class-IV neuronal intermediate filament that is able to self-assemble. It is involved in the morphogenesis of neurons. It may form an independent structural network without the involvement of other neurofilaments or it may cooperate with NF-L to form the filamentous backbone to which NF-M and NF-H attach to form the cross-bridges. |
| Storage Condition and Buffer | Rabbit IgG in phosphate buffered saline , pH 7.4, 150mM NaCl, 0.02% sodium azide and 50% glycerol. Store at +4°C short term. Store at -20°C long term. Avoid freeze / thaw cycle. |

alpha Internexin Antibody - Protein Information**Name** INA**Synonyms** NEF5**Function**

Class-IV neuronal intermediate filament that is able to self- assemble. It is involved in the morphogenesis of neurons. It may form an independent structural network without the involvement of other neurofilaments or it may cooperate with NEFL to form the filamentous backbone to which NEFM and NEFH attach to form the cross-bridges. May also cooperate with the neuronal intermediate filament protein PRPH to form filamentous networks (By similarity).

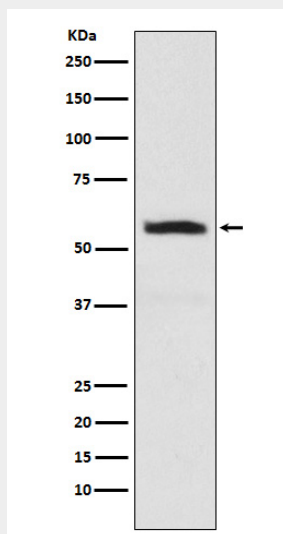
Tissue Location

Found predominantly in adult CNS.

alpha Internexin Antibody - Protocols

Provided below are standard protocols that you may find useful for product applications.

- [Western Blot](#)
- [Blocking Peptides](#)
- [Dot Blot](#)
- [Immunohistochemistry](#)
- [Immunofluorescence](#)
- [Immunoprecipitation](#)
- [Flow Cytometry](#)
- [Cell Culture](#)

alpha Internexin Antibody - Images

Western blot analysis of alpha Internexin expression in SHSY5Y cell lysate.