

**EVI5 Antibody (Center)**  
**Affinity Purified Rabbit Polyclonal Antibody (Pab)**  
**Catalog # AP9168c****Specification**

---

**EVI5 Antibody (Center) - Product Information**

Application	WB,E
Primary Accession	<a href="#">O60447</a>
Other Accession	<a href="#">P97366</a>
Reactivity	Human, Mouse
Host	Rabbit
Clonality	Polyclonal
Isotype	Rabbit IgG
Antigen Region	191-220

**EVI5 Antibody (Center) - Additional Information****Gene ID** 7813**Other Names**

Ecotropic viral integration site 5 protein homolog, EVI-5, Neuroblastoma stage 4S gene protein, EVI5, NB4S

**Target/Specificity**

This EVI5 antibody is generated from rabbits immunized with a KLH conjugated synthetic peptide between 191-220 amino acids from the N-terminal region of human EVI5.

**Dilution**

WB~~1:1000

E~~Use at an assay dependent concentration.

**Format**

Purified polyclonal antibody supplied in PBS with 0.09% (W/V) sodium azide. This antibody is purified through a protein A column, followed by peptide affinity purification.

**Storage**

Maintain refrigerated at 2-8°C for up to 2 weeks. For long term storage store at -20°C in small aliquots to prevent freeze-thaw cycles.

**Precautions**

EVI5 Antibody (Center) is for research use only and not for use in diagnostic or therapeutic procedures.

**EVI5 Antibody (Center) - Protein Information****Name** EVI5**Synonyms** NB4S

**Function** Functions as a regulator of cell cycle progression by stabilizing the FBXO5 protein and promoting cyclin-A accumulation during interphase. May play a role in cytokinesis.

**Cellular Location**

Nucleus. Cytoplasm, cytoskeleton, microtubule organizing center, centrosome. Cytoplasm, cytoskeleton, spindle Note=Associates with the mitotic spindle through anaphase and remains within the midzone and midbody until completion of cytokinesis

**Tissue Location**

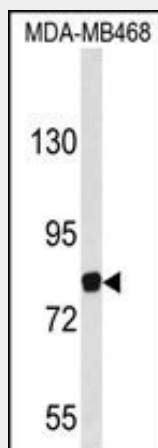
Expressed in various cell lines (at protein level). Expressed in a wide range of tissues including brain and adrenal

**EVI5 Antibody (Center) - Protocols**

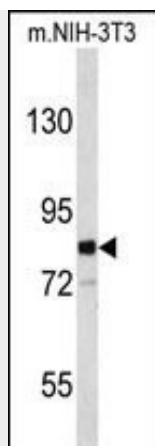
Provided below are standard protocols that you may find useful for product applications.

- [Western Blot](#)
- [Blocking Peptides](#)
- [Dot Blot](#)
- [Immunohistochemistry](#)
- [Immunofluorescence](#)
- [Immunoprecipitation](#)
- [Flow Cytometry](#)
- [Cell Culture](#)

**EVI5 Antibody (Center) - Images**



Western blot analysis of EVI5 Antibody (N-term) (Cat. #AP9168c) in MDA-MB468 cell line lysates (35ug/lane). EVI5 (arrow) was detected using the purified Pab.



Western blot analysis of EVI5 Antibody (N-term) (Cat. #AP9168c) in mouse NIH-3T3 cell line lysates (35ug/lane). EVI5 (arrow) was detected using the purified Pab.

#### **EVI5 Antibody (Center) - Background**

EVI5 is a novel centrosomal protein with a complex expression pattern and subcellular localization, possibly involved in centrosome stability and dynamics. It may act as an oncogene.

#### **EVI5 Antibody (Center) - References**

Jacob,B., et.al., Blood 115 (8), 1610-1620 (2010)  
Hoppenbrouwers,I.A., et.al., J. Hum. Genet. 54 (11), 676-680 (2009)