

**ILF2 Antibody**  
**Rabbit mAb**  
**Catalog # AP91698****Specification**

---

**ILF2 Antibody - Product Information**

Application	WB, IHC, FC, IP
Primary Accession	<a href="#">Q12905</a>
Reactivity	Rat
Clonality	Monoclonal
<b>Other Names</b>	
ILF 2; MGC8391; NF45;	

Isotype	Rabbit IgG
Host	Rabbit
Calculated MW	43062 Da

**ILF2 Antibody - Additional Information**

Dilution	WB~~1:1000 IHC~~1:100~500 FC~~1:10~50 IP~~N/A
Purification	Affinity-chromatography
Immunogen	A synthesized peptide derived from human ILF2
Description	Appears to function predominantly as a heterodimeric complex with ILF3. This complex may regulate transcription of the IL2 gene during T-cell activation. It can also promote the formation of stable DNA-dependent protein kinase holoenzyme complexes on DNA.
Storage Condition and Buffer	Rabbit IgG in phosphate buffered saline , pH 7.4, 150mM NaCl, 0.02% sodium azide and 50% glycerol. Store at +4°C short term. Store at -20°C long term. Avoid freeze / thaw cycle.

**ILF2 Antibody - Protein Information****Name** ILF2**Synonyms** NF45**Function**

Chromatin-interacting protein that forms a stable heterodimer with interleukin enhancer-binding factor 3/ILF3 and plays a role in several biological processes including transcription, innate immunity or cell growth (PubMed: <http://www.uniprot.org/citations/18458058>)

target="\_blank">18458058</a>, PubMed:<a href="http://www.uniprot.org/citations/31212927" target="\_blank">31212927</a>). Essential for the efficient reshuttling of ILF3 (isoform 1 and isoform 2) into the nucleus. Together with ILF3, forms an RNA-binding complex that is required for mitotic progression and cytokinesis by regulating the expression of a cluster of mitotic genes. Mechanistically, competes with STAU1/STAU2-mediated mRNA decay (PubMed:<a href="http://www.uniprot.org/citations/32433969" target="\_blank">32433969</a>). Also plays a role in the inhibition of various viruses including Japanese encephalitis virus or enterovirus 71.

#### Cellular Location

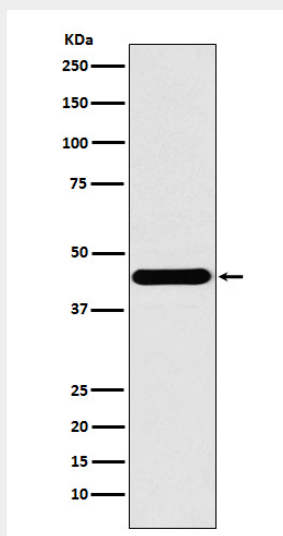
Nucleus, nucleolus. Cytoplasm. Nucleus. Note=Localized in cytoplasmic mRNP granules containing untranslated mRNAs

#### ILF2 Antibody - Protocols

Provided below are standard protocols that you may find useful for product applications.

- [Western Blot](#)
- [Blocking Peptides](#)
- [Dot Blot](#)
- [Immunohistochemistry](#)
- [Immunofluorescence](#)
- [Immunoprecipitation](#)
- [Flow Cytometry](#)
- [Cell Culture](#)

#### ILF2 Antibody - Images



Western blot analysis of ILF2 expression in A431 cell lysate.