

Glucose 6 phosphate isomerase Antibody
Rabbit mAb
Catalog # AP91708**Specification****Glucose 6 phosphate isomerase Antibody - Product Information**

Application	WB, IHC, FC, ICC
Primary Accession	P06744
Clonality	Monoclonal
Other Names	
AMF; NLK; PGI; PHI; GNPI; SA-36; GPI;	
Isotype	Rabbit IgG
Host	Rabbit
Calculated MW	63147 Da

Glucose 6 phosphate isomerase Antibody - Additional Information

Dilution	WB~~1:1000 IHC~~1:100~500 FC~~1:10~50 ICC~~N/A
Purification	Affinity-chromatography
Immunogen	A synthesized peptide derived from human Glucose 6 phosphate isomerase
Description	Besides it's role as a glycolytic enzyme, mammalian GPI can function as a tumor-secreted cytokine and an angiogenic factor (AMF) that stimulates endothelial cell motility. GPI is also a neurotrophic factor (Neuroleukin) for spinal and sensory neurons.
Storage Condition and Buffer	Rabbit IgG in phosphate buffered saline , pH 7.4, 150mM NaCl, 0.02% sodium azide and 50% glycerol. Store at +4°C short term. Store at -20°C long term. Avoid freeze / thaw cycle.

Glucose 6 phosphate isomerase Antibody - Protein Information

Name GPI {ECO:0000303|PubMed:2387591, ECO:0000312|HGNC:HGNC:4458}

Function

Isomerase that catalyzes the conversion of alpha-D-glucose-6- phosphate to beta-D-fructose-6-phosphate, the second step in glycolysis, and the reverse reaction in gluconeogenesis, within the cytoplasm (PubMed:28803808). Also shows C2-epimerase activity, interconverting D-glucose-6-phosphate (G6P) and D-mannose-6-phosphate (M6P) (By similarity). Also displays anomerase activity, interconverting alpha and beta-anomeric

forms of G6P, D-fructose-6- phosphate and M6P (By similarity). In addition to its metabolic role, this enzyme functions extracellularly as a cytokine: acts as autocrine motility factor (AMF), a secreted angiogenic factor that enhances endothelial cell motility (PubMed:11437381). Functions as neuroleukin, a neurotrophic factor supporting the survival of spinal and sensory neurons (PubMed:11004567, PubMed:3352745). Released by lectin- stimulated T-cells to induce immunoglobulin secretion (PubMed:11004567, PubMed:3352745).

Cellular Location

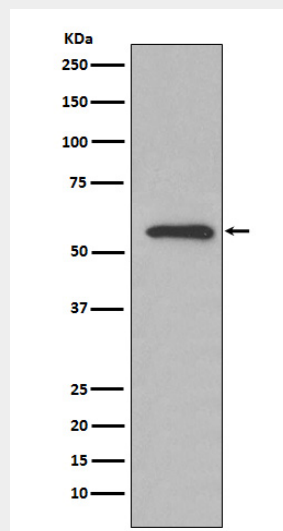
Cytoplasm. Secreted

Glucose 6 phosphate isomerase Antibody - Protocols

Provided below are standard protocols that you may find useful for product applications.

- [Western Blot](#)
- [Blocking Peptides](#)
- [Dot Blot](#)
- [Immunohistochemistry](#)
- [Immunofluorescence](#)
- [Immunoprecipitation](#)
- [Flow Cytometry](#)
- [Cell Culture](#)

Glucose 6 phosphate isomerase Antibody - Images



Western blot analysis of Glucose 6 phosphate isomerase expression in HeLa cell lysate.