

**KIR3DL3 Antibody (Center)**  
**Affinity Purified Rabbit Polyclonal Antibody (Pab)**  
**Catalog # AP9170c**

**Specification**

---

**KIR3DL3 Antibody (Center) - Product Information**

Application	FC, WB, IHC-P,E
Primary Accession	<a href="#">Q8N743</a>
Reactivity	Human
Host	Rabbit
Clonality	Polyclonal
Isotype	Rabbit IgG
Antigen Region	132-158

**KIR3DL3 Antibody (Center) - Additional Information**

**Other Names**

Killer cell immunoglobulin-like receptor 3DL3, CD158 antigen-like family member Z, Killer cell inhibitory receptor 1, CD158z, KIR3DL3, CD158Z, KIR3DL7, KIRC1

**Target/Specificity**

This KIR3DL3 antibody is generated from rabbits immunized with a KLH conjugated synthetic peptide between 132-158 amino acids from the Central region of human KIR3DL3.

**Dilution**

FC~~1:10~50  
WB~~1:1000  
IHC-P~~1:50~100  
E~~Use at an assay dependent concentration.

**Format**

Purified polyclonal antibody supplied in PBS with 0.09% (W/V) sodium azide. This antibody is purified through a protein A column, followed by peptide affinity purification.

**Storage**

Maintain refrigerated at 2-8°C for up to 2 weeks. For long term storage store at -20°C in small aliquots to prevent freeze-thaw cycles.

**Precautions**

KIR3DL3 Antibody (Center) is for research use only and not for use in diagnostic or therapeutic procedures.

**KIR3DL3 Antibody (Center) - Protein Information**

**Name** KIR3DL3

**Synonyms** CD158Z, KIR3DL7, KIRC1

**Function** Receptor on natural killer cells. May inhibit the activity of NK cells thus preventing cell lysis.

**Cellular Location**

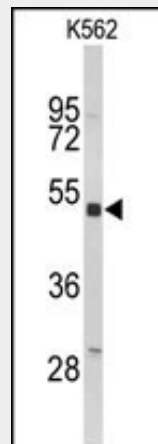
Cell membrane; Single-pass type I membrane protein

**KIR3DL3 Antibody (Center) - Protocols**

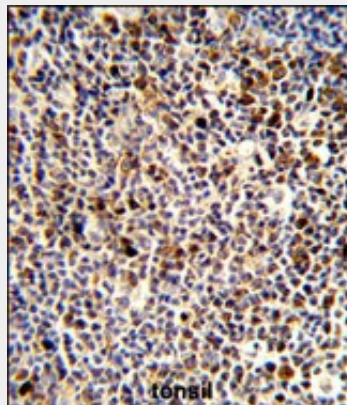
Provided below are standard protocols that you may find useful for product applications.

- [Western Blot](#)
- [Blocking Peptides](#)
- [Dot Blot](#)
- [Immunohistochemistry](#)
- [Immunofluorescence](#)
- [Immunoprecipitation](#)
- [Flow Cytometry](#)
- [Cell Culture](#)

**KIR3DL3 Antibody (Center) - Images**

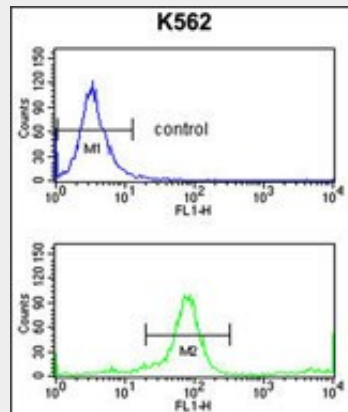


Western blot analysis of KIR3DL3 Antibody (Center) (Cat. #AP9170c) in K562 cell line lysates (35ug/lane). KIR3DL3 (arrow) was detected using the purified Pab.



Formalin-fixed and paraffin-embedded human tonsil reacted with KIR3DL3 Antibody (Center), which was peroxidase-conjugated to the secondary antibody, followed by DAB staining. This data

demonstrates the use of this antibody for immunohistochemistry; clinical relevance has not been evaluated.



KIR3DL3 Antibody (Center) (Cat. #AP9170c) flow cytometry analysis of K562 cells (bottom histogram) compared to a negative control cell (top histogram). FITC-conjugated goat-anti-rabbit secondary antibody was used for the analysis.

#### **KIR3DL3 Antibody (Center) - Background**

KIR3DL3 is transmembrane glycoproteins expressed by natural killer cells and subsets of T cells. This protein are polymorphic and highly homologous and they are found in a cluster on chromosome 19q13.4 within the 1 Mb leukocyte receptor complex (LRC).

#### **KIR3DL3 Antibody (Center) - References**

Trompeter, H.I., et al., J. Immunol. 174 (7), 4135-4143 (2005)  
Arnheim, L., et al., Tissue Antigens 65 (3), 252-259 (2005)