

**Histone H1.2 Antibody**  
**Rabbit mAb**  
**Catalog # AP91733****Specification**

---

**Histone H1.2 Antibody - Product Information**

Application	WB, IHC, ICC
Primary Accession	<a href="#">P16403</a>
Reactivity	Rat
Clonality	Monoclonal
<b>Other Names</b>	
H1.a; H1F2; H1s-1; HIST1H1C; Histone H1.2; Histone H1c; Histone H1d; Histone H1s-1;	
Isotype	Rabbit IgG
Host	Rabbit
Calculated MW	21365 Da

**Histone H1.2 Antibody - Additional Information**

Dilution	WB~~1:1000 IHC~~1:100~500 ICC~~N/A
Purification	Affinity-chromatography
Immunogen	A synthesized peptide derived from human Histone H1.2
Description	Histones H1 are necessary for the condensation of nucleosome chains into higher order structures.
Storage Condition and Buffer	Rabbit IgG in phosphate buffered saline , pH 7.4, 150mM NaCl, 0.02% sodium azide and 50% glycerol. Store at +4°C short term. Store at -20°C long term. Avoid freeze / thaw cycle.

**Histone H1.2 Antibody - Protein Information****Name** H1-2 ([HGNC:4716](#))**Function**

Histone H1 protein binds to linker DNA between nucleosomes forming the macromolecular structure known as the chromatin fiber. Histones H1 are necessary for the condensation of nucleosome chains into higher-order structured fibers. Also acts as a regulator of individual gene transcription through chromatin remodeling, nucleosome spacing and DNA methylation (By similarity).

**Cellular Location**

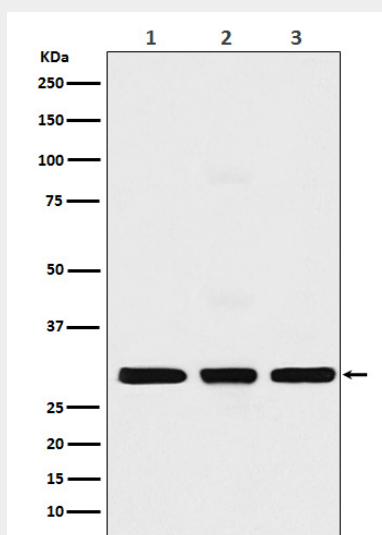
Nucleus. Chromosome. Note=Mainly localizes in euchromatin. Distribution goes in parallel with DNA concentration

## Histone H1.2 Antibody - Protocols

Provided below are standard protocols that you may find useful for product applications.

- [Western Blot](#)
- [Blocking Peptides](#)
- [Dot Blot](#)
- [Immunohistochemistry](#)
- [Immunofluorescence](#)
- [Immunoprecipitation](#)
- [Flow Cytometry](#)
- [Cell Culture](#)

## Histone H1.2 Antibody - Images



Western blot analysis of Histone H1.2 expression in (1) MCF7 cell lysate (2) NIH/3T3 cell lysate; (3) C6 cell lysate.