

**SLC6A1 / GAT1 Antibody**  
**Rabbit mAb**  
**Catalog # AP91743**

## Specification

---

### SLC6A1 / GAT1 Antibody - Product Information

Application	WB
Primary Accession	<a href="#">P30531</a>
Reactivity	Rat
Clonality	Monoclonal
<b>Other Names</b>	
GABATHG; GABATR; GABT1; GAT1; Slc6a1;	
Isotype	Rabbit IgG
Host	Rabbit
Calculated MW	67074 Da

### SLC6A1 / GAT1 Antibody - Additional Information

Dilution	WB~~1:1000
Purification	Affinity-chromatography
Immunogen	A synthesized peptide derived from human SLC6A1 / GAT1
Description	Terminates the action of GABA by its high affinity sodium-dependent reuptake into presynaptic terminals.
Storage Condition and Buffer	Rabbit IgG in phosphate buffered saline , pH 7.4, 150mM NaCl, 0.02% sodium azide and 50% glycerol. Store at +4°C short term. Store at -20°C long term. Avoid freeze / thaw cycle.

### SLC6A1 / GAT1 Antibody - Protein Information

**Name** SLC6A1

**Synonyms** GABATR, GABT1, GAT1

#### Function

Mediates transport of gamma-aminobutyric acid (GABA) together with sodium and chloride and is responsible for the reuptake of GABA from the synapse (PubMed:<a href="http://www.uniprot.org/citations/30132828" target="\_blank">30132828</a>). The translocation of GABA, however, may also occur in the reverse direction leading to the release of GABA (By similarity). The direction and magnitude of GABA transport is a consequence of the prevailing thermodynamic conditions, determined by membrane potential and the intracellular and extracellular concentrations of Na(+), Cl(-) and GABA (By similarity). Can also mediate sodium- and chloride-dependent transport of hypotaurine but to a much lower extent as compared to GABA (By similarity).

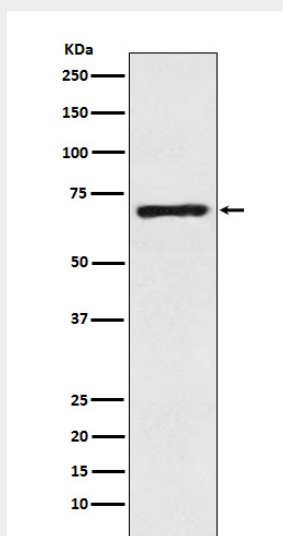
**Cellular Location**

Cell membrane {ECO:0000250|UniProtKB:P23978}; Multi-pass membrane protein. Presynapse {ECO:0000250|UniProtKB:P31648}. Note=Localized at the presynaptic terminals of interneurons. {ECO:0000250|UniProtKB:P31648}

**SLC6A1 / GAT1 Antibody - Protocols**

Provided below are standard protocols that you may find useful for product applications.

- [Western Blot](#)
- [Blocking Peptides](#)
- [Dot Blot](#)
- [Immunohistochemistry](#)
- [Immunofluorescence](#)
- [Immunoprecipitation](#)
- [Flow Cytometry](#)
- [Cell Culture](#)

**SLC6A1 / GAT1 Antibody - Images**

Western blot analysis of GABA Transporter 1 / GAT 1 expression in Human fetal brain lysate.