

**PSB9 / LMP2 Antibody**  
**Rabbit mAb**  
**Catalog # AP91760****Specification****PSB9 / LMP2 Antibody - Product Information**

Application	WB, FC, ICC
Primary Accession	<a href="#">P28065</a>
Reactivity	Rat
Clonality	Monoclonal

**Other Names**

Beta1i; LMP2; PSMB 9; PSMB6i; PSMB9; RING12;

Isotype	Rabbit IgG
Host	Rabbit
Calculated MW	23264 Da

**PSB9 / LMP2 Antibody - Additional Information**

Dilution	WB~~1:1000 FC~~1:10~50 ICC~~N/A
Purification	Affinity-chromatography
Immunogen	A synthesized peptide derived from human Proteasome 20S LMP2
Description	The proteasome is a multicatalytic proteinase complex which is characterized by its ability to cleave peptides with Arg, Phe, Tyr, Leu, and Glu adjacent to the leaving group at neutral or slightly basic pH. The proteasome has an ATP-dependent proteolytic activity.
Storage Condition and Buffer	Rabbit IgG in phosphate buffered saline , pH 7.4, 150mM NaCl, 0.02% sodium azide and 50% glycerol. Store at +4°C short term. Store at -20°C long term. Avoid freeze / thaw cycle.

**PSB9 / LMP2 Antibody - Protein Information****Name** PSMB9**Synonyms** LMP2, PSMB6i, RING12**Function**

The proteasome is a multicatalytic proteinase complex which is characterized by its ability to cleave peptides with Arg, Phe, Tyr, Leu, and Glu adjacent to the leaving group at neutral or slightly basic pH (PubMed:<a href="http://www.uniprot.org/citations/33727065" target="\_blank">33727065</a>, PubMed:<a href="http://www.uniprot.org/citations/34819510"

target="\_blank">34819510</a>). The proteasome has an ATP- dependent proteolytic activity. This subunit is involved in antigen processing to generate class I binding peptides. Replacement of PSMB6 by PSMB9 increases the capacity of the immunoproteasome to cleave model peptides after hydrophobic and basic residues.

#### Cellular Location

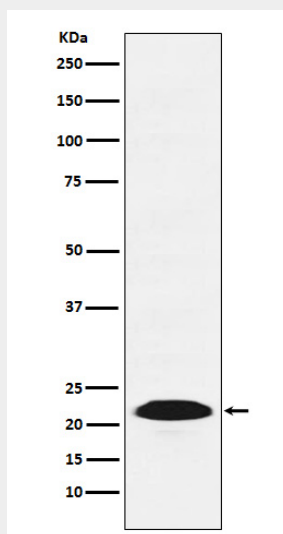
Cytoplasm {ECO:0000255|PROSITE-ProRule:PRU00809}. Nucleus

#### PSB9 / LMP2 Antibody - Protocols

Provided below are standard protocols that you may find useful for product applications.

- [Western Blot](#)
- [Blocking Peptides](#)
- [Dot Blot](#)
- [Immunohistochemistry](#)
- [Immunofluorescence](#)
- [Immunoprecipitation](#)
- [Flow Cytometry](#)
- [Cell Culture](#)

#### PSB9 / LMP2 Antibody - Images



Western blot analysis of Proteasome 20S LMP2 expression in A431 cell lysate.