

NPHS2 Antibody
Rabbit mAb
Catalog # AP91765**Specification**

NPHS2 Antibody - Product Information

Application	WB, IHC
Primary Accession	Q9NP85
Reactivity	Rat
Clonality	Monoclonal
Other Names	
NPHS2; PDCN; Podocin; SRN1;	
Isotype	Rabbit IgG
Host	Rabbit
Calculated MW	42201 Da

NPHS2 Antibody - Additional Information

Dilution	WB~~1:1000 IHC~~1:100~500
Purification	Affinity-chromatography
Immunogen	A synthesized peptide derived from human NPHS2
Description	Plays a role in the regulation of glomerular permeability, acting probably as a linker between the plasma membrane and the cytoskeleton.
Storage Condition and Buffer	Rabbit IgG in phosphate buffered saline , pH 7.4, 150mM NaCl, 0.02% sodium azide and 50% glycerol. Store at +4°C short term. Store at -20°C long term. Avoid freeze / thaw cycle.

NPHS2 Antibody - Protein Information**Name** NPHS2**Function**

Plays a role in the regulation of glomerular permeability, acting probably as a linker between the plasma membrane and the cytoskeleton.

Cellular Location

[Isoform 1]: Cell membrane; Peripheral membrane protein

Tissue Location

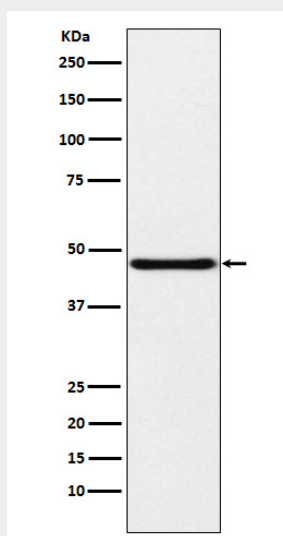
Almost exclusively expressed in the podocytes of fetal and mature kidney glomeruli

NPHS2 Antibody - Protocols

Provided below are standard protocols that you may find useful for product applications.

- [Western Blot](#)
- [Blocking Peptides](#)
- [Dot Blot](#)
- [Immunohistochemistry](#)
- [Immunofluorescence](#)
- [Immunoprecipitation](#)
- [Flow Cytometry](#)
- [Cell Culture](#)

NPHS2 Antibody - Images



Western blot analysis of NPHS2 expression in Human fetal kidney lysate.