

PSMB8 / LMP7 antibody
Rabbit mAb
Catalog # AP91776**Specification**

PSMB8 / LMP7 antibody - Product Information

Application	WB, IHC, FC, ICC, IP
Primary Accession	P28062
Reactivity	Rat
Clonality	Monoclonal
Other Names	
JMP; LMP7; D6S216; PSMB5i; PSMB8; RING10; D6S216E;	
Isotype	Rabbit IgG
Host	Rabbit
Calculated MW	30354 Da

PSMB8 / LMP7 antibody - Additional Information

Dilution	WB~~1:1000 IHC~~1:100~500 FC~~1:10~50 ICC~~N/A IP~~N/A
Purification	Affinity-chromatography
Immunogen	A synthesized peptide derived from human Proteasome 20S LMP7
Description	The proteasome is a multicatalytic proteinase complex which is characterized by its ability to cleave peptides with Arg, Phe, Tyr, Leu, and Glu adjacent to the leaving group at neutral or slightly basic pH. The proteasome has an ATP-dependent proteolytic activity.
Storage Condition and Buffer	Rabbit IgG in phosphate buffered saline , pH 7.4, 150mM NaCl, 0.02% sodium azide and 50% glycerol. Store at +4°C short term. Store at -20°C long term. Avoid freeze / thaw cycle.

PSMB8 / LMP7 antibody - Protein Information**Name** PSMB8**Synonyms** LMP7, PSMB5i, RING10, Y2**Function**

The proteasome is a multicatalytic proteinase complex which is characterized by its ability to cleave peptides with Arg, Phe, Tyr, Leu, and Glu adjacent to the leaving group at neutral or slightly

basic pH. The proteasome has an ATP-dependent proteolytic activity. This subunit is involved in antigen processing to generate class I binding peptides. Replacement of PSMB5 by PSMB8 increases the capacity of the immunoproteasome to cleave model peptides after hydrophobic and basic residues. Involved in the generation of spliced peptides resulting from the ligation of two separate proteasomal cleavage products that are not contiguous in the parental protein (PubMed:27049119). Acts as a major component of interferon gamma-induced sensitivity. Plays a key role in apoptosis via the degradation of the apoptotic inhibitor MCL1. May be involved in the inflammatory response pathway. In cancer cells, substitution of isoform 1 (E2) by isoform 2 (E1) results in immunoproteasome deficiency. Required for the differentiation of preadipocytes into adipocytes.

Cellular Location

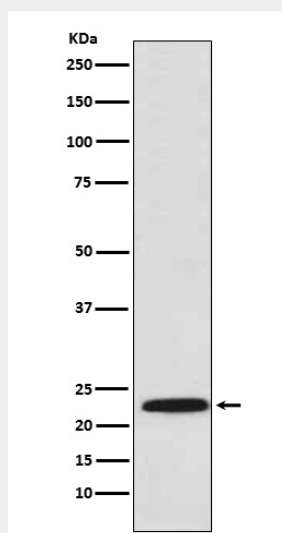
Cytoplasm {ECO:0000255|PROSITE-ProRule:PRU00809}. Nucleus

PSMB8 / LMP7 antibody - Protocols

Provided below are standard protocols that you may find useful for product applications.

- [Western Blot](#)
- [Blocking Peptides](#)
- [Dot Blot](#)
- [Immunohistochemistry](#)
- [Immunofluorescence](#)
- [Immunoprecipitation](#)
- [Flow Cytometry](#)
- [Cell Culture](#)

PSMB8 / LMP7 antibody - Images



Western blot analysis of Proteasome 20S LMP7 expression in U937 cell lysate.