

TPH2 Antibody (Center)
Affinity Purified Rabbit Polyclonal Antibody (Pab)
Catalog # AP9177C**Specification**

TPH2 Antibody (Center) - Product Information

Application	FC, IHC-P, WB,E
Primary Accession	Q8IWU9
Other Accession	Q8CGU9 , Q8CGV2 , Q0EAB8
Reactivity	Human
Predicted	Horse, Mouse, Rat
Host	Rabbit
Clonality	Polyclonal
Isotype	Rabbit IgG
Calculated MW	56057
Antigen Region	168-193

TPH2 Antibody (Center) - Additional Information**Gene ID** 121278**Other Names**

Tryptophan 5-hydroxylase 2, Neuronal tryptophan hydroxylase, Tryptophan 5-monooxygenase 2, TPH2, NTPH

Target/Specificity

This TPH2 antibody is generated from rabbits immunized with a KLH conjugated synthetic peptide between 168-193 amino acids from the Central region of human TPH2.

Dilution

FC~~1:10~50

IHC-P~~1:10~50

WB~~1:1000

E~~Use at an assay dependent concentration.

Format

Purified polyclonal antibody supplied in PBS with 0.09% (W/V) sodium azide. This antibody is purified through a protein A column, followed by peptide affinity purification.

Storage

Maintain refrigerated at 2-8°C for up to 2 weeks. For long term storage store at -20°C in small aliquots to prevent freeze-thaw cycles.

Precautions

TPH2 Antibody (Center) is for research use only and not for use in diagnostic or therapeutic procedures.

TPH2 Antibody (Center) - Protein Information

Name TPH2

Synonyms NTPH

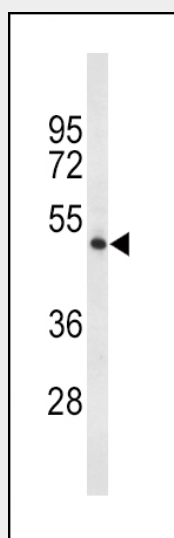
Tissue Location
Brain specific.

TPH2 Antibody (Center) - Protocols

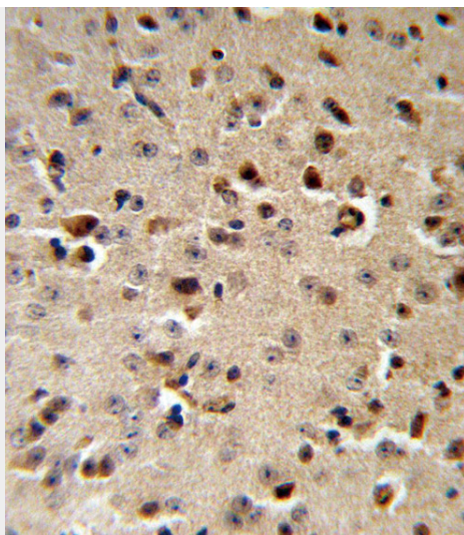
Provided below are standard protocols that you may find useful for product applications.

- [Western Blot](#)
- [Blocking Peptides](#)
- [Dot Blot](#)
- [Immunohistochemistry](#)
- [Immunofluorescence](#)
- [Immunoprecipitation](#)
- [Flow Cytometry](#)
- [Cell Culture](#)

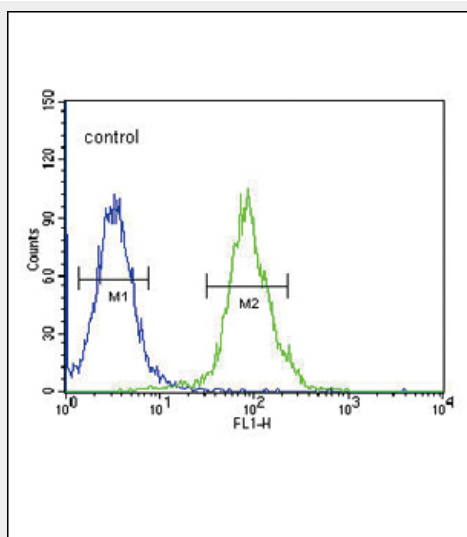
TPH2 Antibody (Center) - Images



Western blot analysis of TPH2 Antibody (Center) (Cat. #AP9177c) in 293 cell line lysates (35ug/lane). TPH2 (arrow) was detected using the purified Pab.



TPH2 Antibody (Center) (Cat. #AP9177c) IHC analysis in formalin fixed and paraffin embedded mouse brain followed by peroxidase conjugation of the secondary antibody and DAB staining. This data demonstrates the use of the TPH2 Antibody (Center) for immunohistochemistry. Clinical relevance has not been evaluated.



TPH2 Antibody (Center) (Cat. #AP9177c) flow cytometric analysis of 293 cells (right histogram) compared to a negative control cell (left histogram). FITC-conjugated goat-anti-rabbit secondary antibodies were used for the analysis.

TPH2 Antibody (Center) - Background

This protein is a member of the cytidine deaminase gene family. It is one of seven related genes or pseudogenes found in a cluster, thought to result from gene duplication, on chromosome 22. Members of the cluster encode proteins that are structurally and functionally related to the C to U RNA-editing cytidine deaminase APOBEC1. It is thought that the proteins may be RNA editing enzymes and have roles in growth or cell cycle control.

TPH2 Antibody (Center) - References

Khatua, A.K., et.al., Virology 400 (1), 68-75 (2010)
Koning, F.A., et.al., J. Virol. 83 (18), 9474-9485 (2009)