

Syntrophin alpha 1 Antibody
Rabbit mAb
Catalog # AP91783**Specification**

Syntrophin alpha 1 Antibody - Product Information

Application	WB, IHC, FC, ICC
Primary Accession	Q13424
Clonality	Monoclonal
Other Names	
Alpha 1 syntrophin; LQT12; SNT1; Snta1; Syntrophin 1; TACIP1;	
Isotype	Rabbit IgG
Host	Rabbit
Calculated MW	53895 Da

Syntrophin alpha 1 Antibody - Additional Information

Dilution	WB~~1:1000 IHC~~1:100~500 FC~~1:10~50 ICC~~N/A
Purification	Affinity-chromatography
Immunogen	A synthesized peptide derived from human Syntrophin alpha 1
Description	Adapter protein that binds to and probably organizes the subcellular localization of a variety of membrane proteins. May link various receptors to the actin cytoskeleton and the extracellular matrix via the dystrophin glycoprotein complex.
Storage Condition and Buffer	Rabbit IgG in phosphate buffered saline , pH 7.4, 150mM NaCl, 0.02% sodium azide and 50% glycerol. Store at +4°C short term. Store at -20°C long term. Avoid freeze / thaw cycle.

Syntrophin alpha 1 Antibody - Protein Information**Name** SNTA1**Synonyms** SNT1**Function**

Adapter protein that binds to and probably organizes the subcellular localization of a variety of membrane proteins. May link various receptors to the actin cytoskeleton and the extracellular matrix via the dystrophin glycoprotein complex. Plays an important role in synapse formation and in the organization of UTRN and acetylcholine receptors at the neuromuscular synapse. Binds to phosphatidylinositol 4,5-bisphosphate (By similarity).

Cellular Location

Cell membrane, sarcolemma; Peripheral membrane protein; Cytoplasmic side. Cell junction. Cytoplasm, cytoskeleton. Note=In skeletal muscle, it localizes at the cytoplasmic side of the sarcolemmal membrane and at neuromuscular junctions

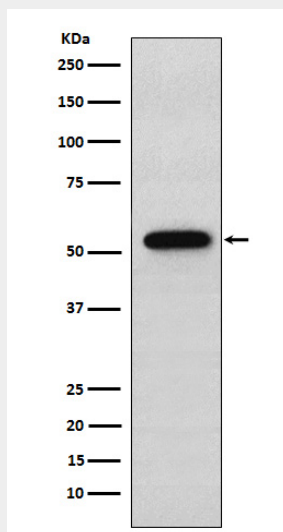
Tissue Location

High expression in skeletal muscle and heart. Low expression in brain, pancreas, liver, kidney and lung. Not detected in placenta

Syntrophin alpha 1 Antibody - Protocols

Provided below are standard protocols that you may find useful for product applications.

- [Western Blot](#)
- [Blocking Peptides](#)
- [Dot Blot](#)
- [Immunohistochemistry](#)
- [Immunofluorescence](#)
- [Immunoprecipitation](#)
- [Flow Cytometry](#)
- [Cell Culture](#)

Syntrophin alpha 1 Antibody - Images

Western blot analysis of Syntrophin alpha 1 expression in A549 cell lysate.