

Thioredoxin 2 Antibody
Rabbit mAb
Catalog # AP91790**Specification**

Thioredoxin 2 Antibody - Product Information

Application	WB, IHC, FC, ICC
Primary Accession	Q99757
Reactivity	Rat
Clonality	Monoclonal
Other Names	
MT-TRX; MTRX; Thioredoxin2; TRX2; TXN2;	

Isotype	Rabbit IgG
Host	Rabbit
Calculated MW	18383 Da

Thioredoxin 2 Antibody - Additional Information

Dilution	WB~~1:1000 IHC~~1:100~500 FC~~1:10~50 ICC~~N/A
Purification	Affinity-chromatography
Immunogen	A synthesized peptide derived from human Thioredoxin 2
Description	Thioredoxins (Trx) are small, multi-functional proteins with oxidoreductase activity and are ubiquitous in essentially all living cells. Trx contains a redox-active disulfide/dithiol group within the conserved Cys-Gly-Pro-Cys active site.
Storage Condition and Buffer	Rabbit IgG in phosphate buffered saline , pH 7.4, 150mM NaCl, 0.02% sodium azide and 50% glycerol. Store at +4°C short term. Store at -20°C long term. Avoid freeze / thaw cycle.

Thioredoxin 2 Antibody - Protein Information**Name** TXN2**Synonyms** TRX2**Function**

Important for the control of mitochondrial reactive oxygen species homeostasis, apoptosis regulation and cell viability (PubMed:12032145, PubMed:12080052, PubMed:26626369)

target="_blank">26626369) Is involved in various redox reactions including the reduction of protein disulfide bonds, through the reversible oxidation of its active center dithiol to a disulfide (By similarity).

Cellular Location

Mitochondrion

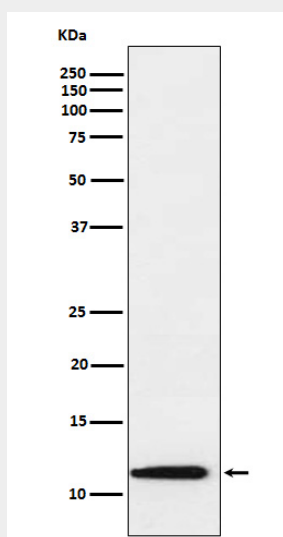
Tissue Location

Widely expressed in adult (at protein level) and fetal tissues.

Thioredoxin 2 Antibody - Protocols

Provided below are standard protocols that you may find useful for product applications.

- [Western Blot](#)
- [Blocking Peptides](#)
- [Dot Blot](#)
- [Immunohistochemistry](#)
- [Immunofluorescence](#)
- [Immunoprecipitation](#)
- [Flow Cytometry](#)
- [Cell Culture](#)

Thioredoxin 2 Antibody - Images

Western blot analysis of Thioredoxin 2 expression in Raji cell lysate.