

PON2 Antibody
Rabbit mAb
Catalog # AP91793**Specification**

PON2 Antibody - Product Information

Application	WB, IHC, IP
Primary Accession	Q15165
Reactivity	Rat
Clonality	Monoclonal
Other Names	
A esterase 2; Paraoxonase 2; PON2;	

Isotype	Rabbit IgG
Host	Rabbit
Calculated MW	39381 Da

PON2 Antibody - Additional Information

Dilution	WB~~1:1000 IHC~~1:100~500 IP~~N/A
Purification	Affinity-chromatography
Immunogen	A synthesized peptide derived from human PON2
Description	Capable of hydrolyzing lactones and a number of aromatic carboxylic acid esters. Has antioxidant activity. Is not associated with high density lipoprotein. Prevents LDL lipid peroxidation, reverses the oxidation of mildly oxidized LDL, and inhibits the ability of MM-LDL to induce monocyte chemotaxis.
Storage Condition and Buffer	Rabbit IgG in phosphate buffered saline , pH 7.4, 150mM NaCl, 0.02% sodium azide and 50% glycerol. Store at +4°C short term. Store at -20°C long term. Avoid freeze / thaw cycle.

PON2 Antibody - Protein Information**Name** PON2**Function**

Capable of hydrolyzing lactones and a number of aromatic carboxylic acid esters. Has antioxidant activity. Is not associated with high density lipoprotein. Prevents LDL lipid peroxidation, reverses the oxidation of mildly oxidized LDL, and inhibits the ability of MM-LDL to induce monocyte chemotaxis.

Cellular Location

Membrane; Peripheral membrane protein

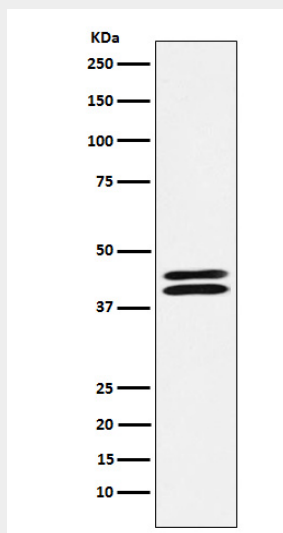
Tissue Location

Widely expressed with highest expression in liver, lung, placenta, testis and heart.

PON2 Antibody - Protocols

Provided below are standard protocols that you may find useful for product applications.

- [Western Blot](#)
- [Blocking Peptides](#)
- [Dot Blot](#)
- [Immunohistochemistry](#)
- [Immunofluorescence](#)
- [Immunoprecipitation](#)
- [Flow Cytometry](#)
- [Cell Culture](#)

PON2 Antibody - Images

Western blot analysis of PON2 expression in HeLa cell lysate.