

**TGF alpha Antibody**  
**Rabbit mAb**  
**Catalog # AP91796****Specification**

---

**TGF alpha Antibody - Product Information**

Application	WB, IHC, ICC, IP
Primary Accession	<a href="#">P01135</a>
Clonality	Monoclonal
<b>Other Names</b>	
ETGF; TFGA; TGF A; TGF-alpha; Tgfa; Wa1; Waved 1;	

Isotype	Rabbit IgG
Host	Rabbit
Calculated MW	17006 Da

**TGF alpha Antibody - Additional Information**

Dilution	WB~~1:1000 IHC~~1:100~500 ICC~~N/A IP~~N/A
Purification	Affinity-chromatography
Immunogen	A synthesized peptide derived from human TGF alpha
Description	TGF alpha is a mitogenic polypeptide that is able to bind to the EGF receptor and to act synergistically with TGF beta to promote anchorage-independent cell proliferation in soft agar.
Storage Condition and Buffer	Rabbit IgG in phosphate buffered saline , pH 7.4, 150mM NaCl, 0.02% sodium azide and 50% glycerol. Store at +4°C short term. Store at -20°C long term. Avoid freeze / thaw cycle.

**TGF alpha Antibody - Protein Information****Name** TGFA**Function**

TGF alpha is a mitogenic polypeptide that is able to bind to the EGF receptor/EGFR and to act synergistically with TGF beta to promote anchorage-independent cell proliferation in soft agar.

**Cellular Location**

[Transforming growth factor alpha]: Secreted, extracellular space

**Tissue Location**

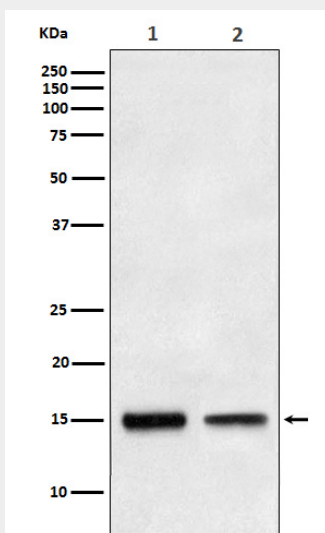
Isoform 1, isoform 3 and isoform 4 are expressed in keratinocytes and tumor-derived cell lines

## TGF alpha Antibody - Protocols

Provided below are standard protocols that you may find useful for product applications.

- [Western Blot](#)
- [Blocking Peptides](#)
- [Dot Blot](#)
- [Immunohistochemistry](#)
- [Immunofluorescence](#)
- [Immunoprecipitation](#)
- [Flow Cytometry](#)
- [Cell Culture](#)

## TGF alpha Antibody - Images



Western blot analysis of TGF alpha expression in (1) HepG2 cell lysate; (2) Human fetal liver lysate.