

SAE1 Antibody
Rabbit mAb
Catalog # AP91797**Specification**

SAE1 Antibody - Product Information

Application	WB, FC, ICC, IP
Primary Accession	Q9UBE0
Reactivity	Rat
Clonality	Monoclonal
Other Names	
AOS1; HSPC140; Sae1; SUA1; UBLE1A;	
Isotype	Rabbit IgG
Host	Rabbit
Calculated MW	38450 Da

SAE1 Antibody - Additional Information

Dilution	WB~~1:1000 FC~~1:10~50 ICC~~N/A IP~~N/A
Purification	Affinity-chromatography
Immunogen	A synthesized peptide derived from human SAE1
Description	The heterodimer acts as a E1 ligase for SUMO1, SUMO2, SUMO3, and probably SUMO4. It mediates ATP-dependent activation of SUMO proteins followed by formation of a thioester bond between a SUMO protein and a conserved active site cysteine residue on UBA2/SAE2.
Storage Condition and Buffer	Rabbit IgG in phosphate buffered saline , pH 7.4, 150mM NaCl, 0.02% sodium azide and 50% glycerol. Store at +4°C short term. Store at -20°C long term. Avoid freeze / thaw cycle.

SAE1 Antibody - Protein Information**Name** SAE1**Synonyms** AOS1, SUA1, UBLE1A**Function**

The heterodimer acts as an E1 ligase for SUMO1, SUMO2, SUMO3, and probably SUMO4. It mediates ATP-dependent activation of SUMO proteins followed by formation of a thioester bond between a SUMO protein and a conserved active site cysteine residue on UBA2/SAE2.

Cellular Location

Nucleus.

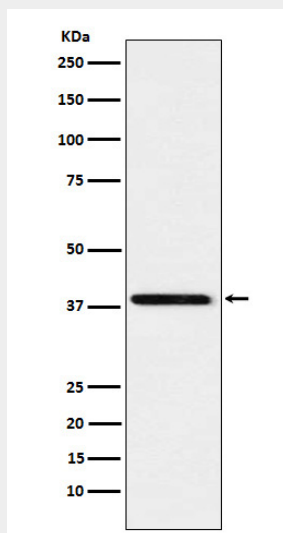
Tissue Location

Expression level increases during S phase and drops in G2 phase (at protein level).

SAE1 Antibody - Protocols

Provided below are standard protocols that you may find useful for product applications.

- [Western Blot](#)
- [Blocking Peptides](#)
- [Dot Blot](#)
- [Immunohistochemistry](#)
- [Immunofluorescence](#)
- [Immunoprecipitation](#)
- [Flow Cytometry](#)
- [Cell Culture](#)

SAE1 Antibody - Images

Western blot analysis of SAE1 expression in Jurkat cell lysate.