

Parathyroid Hormone Receptor 1 Antibody
Rabbit mAb
Catalog # AP91804**Specification**

Parathyroid Hormone Receptor 1 Antibody - Product Information

Application	WB, IP
Primary Accession	Q03431
Clonality	Monoclonal
Other Names	
PTH receptor; PTH1 receptor; PTH1R; PTHR 1; PTHR; PTHR1;	
Isotype	Rabbit IgG
Host	Rabbit
Calculated MW	66361 Da

Parathyroid Hormone Receptor 1 Antibody - Additional Information

Purification	Affinity-chromatography
Immunogen	A synthesized peptide derived from human Parathyroid Hormone Receptor 1
Description	Receptor for parathyroid hormone and for parathyroid hormone-related peptide. The activity of this receptor is mediated by G proteins which activate adenylyl cyclase and also a phosphatidylinositol-calcium second messenger system.
Storage Condition and Buffer	Rabbit IgG in phosphate buffered saline , pH 7.4, 150mM NaCl, 0.02% sodium azide and 50% glycerol. Store at +4°C short term. Store at -20°C long term. Avoid freeze / thaw cycle.

Parathyroid Hormone Receptor 1 Antibody - Protein Information**Name** PTH1R**Synonyms** PTHR, PTHR1**Function**

Receptor for parathyroid hormone and for parathyroid hormone-related peptide. The activity of this receptor is mediated by G proteins which activate adenylyl cyclase and also a phosphatidylinositol-calcium second messenger system.

Cellular Location

Cell membrane; Multi-pass membrane protein

Tissue Location

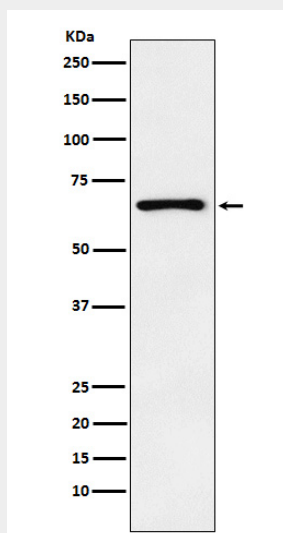
Expressed in most tissues. Most abundant in kidney, bone and liver.

Parathyroid Hormone Receptor 1 Antibody - Protocols

Provided below are standard protocols that you may find useful for product applications.

- [Western Blot](#)
- [Blocking Peptides](#)
- [Dot Blot](#)
- [Immunohistochemistry](#)
- [Immunofluorescence](#)
- [Immunoprecipitation](#)
- [Flow Cytometry](#)
- [Cell Culture](#)

Parathyroid Hormone Receptor 1 Antibody - Images



Western blot analysis of Parathyroid Hormone Receptor 1 expression in HeLa cell lysate.