

**Retinoic Acid Receptor gamma Antibody**  
**Rabbit mAb**  
**Catalog # AP91805****Specification**

---

**Retinoic Acid Receptor gamma Antibody - Product Information**

Application	WB, ICC
Primary Accession	<a href="#">P13631</a>
Reactivity	Rat
Clonality	Monoclonal
<b>Other Names</b>	
NR1B3; RAR gamma; RARC; Rarg;	
Isotype	Rabbit IgG
Host	Rabbit
Calculated MW	50342 Da

**Retinoic Acid Receptor gamma Antibody - Additional Information**

Dilution	WB~~1:1000 ICC~~N/A
Purification	Affinity-chromatography
Immunogen	A synthesized peptide derived from human Retinoic Acid Receptor gamma
Description	Receptor for retinoic acid. Retinoic acid receptors bind as heterodimers to their target response elements in response to their ligands, all-trans or 9-cis retinoic acid, and regulate gene expression in various biological processes.
Storage Condition and Buffer	Rabbit IgG in phosphate buffered saline , pH 7.4, 150mM NaCl, 0.02% sodium azide and 50% glycerol. Store at +4°C short term. Store at -20°C long term. Avoid freeze / thaw cycle.

**Retinoic Acid Receptor gamma Antibody - Protein Information****Name** RARG**Synonyms** NR1B3**Function**

Receptor for retinoic acid. Retinoic acid receptors bind as heterodimers to their target response elements in response to their ligands, all-trans or 9-cis retinoic acid, and regulate gene expression in various biological processes. The RAR/RXR heterodimers bind to the retinoic acid response elements (RARE) composed of tandem 5'-AGGTCA-3' sites known as DR1-DR5. In the absence of ligand, acts mainly as an activator of gene expression due to weak binding to corepressors. Required for limb bud development. In concert with RARA or RARB, required for skeletal growth,

matrix homeostasis and growth plate function (By similarity).

**Cellular Location**

Nucleus. Cytoplasm

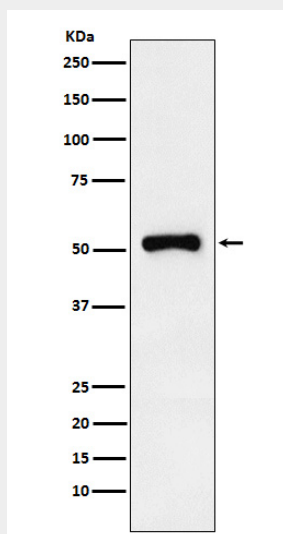
**Tissue Location**

Expressed in aortic endothelial cells (at protein level).

**Retinoic Acid Receptor gamma Antibody - Protocols**

Provided below are standard protocols that you may find useful for product applications.

- [Western Blot](#)
- [Blocking Peptides](#)
- [Dot Blot](#)
- [Immunohistochemistry](#)
- [Immunofluorescence](#)
- [Immunoprecipitation](#)
- [Flow Cytometry](#)
- [Cell Culture](#)

**Retinoic Acid Receptor gamma Antibody - Images**

Western blot analysis of Retinoic Acid Receptor gamma expression in HeLa cell lysate.