

p53 DINP1 Antibody
Rabbit mAb
Catalog # AP91821**Specification**

p53 DINP1 Antibody - Product Information

Application	WB, IHC, ICC
Primary Accession	Q96A56
Reactivity	Rat
Clonality	Monoclonal
Other Names	
p53DINP1; SIP; Teap; TP53DINP1; TP53INP1; TP53INP1A; TP53INP1B;	
Isotype	Rabbit IgG
Host	Rabbit
Calculated MW	27366 Da

p53 DINP1 Antibody - Additional Information

Dilution	WB~~1:1000 IHC~~1:100~500 ICC~~N/A
Purification	Affinity-chromatography
Immunogen	A synthesized peptide derived from human p53 DINP1
Description	In response to double-strand DNA breaks, promotes p53/TP53 phosphorylation on 'Ser-46' and subsequent apoptosis.
Storage Condition and Buffer	Rabbit IgG in phosphate buffered saline , pH 7.4, 150mM NaCl, 0.02% sodium azide and 50% glycerol. Store at +4°C short term. Store at -20°C long term. Avoid freeze / thaw cycle.

p53 DINP1 Antibody - Protein Information**Name** TP53INP1**Synonyms** P53DINP1, SIP**Function**

Antiproliferative and proapoptotic protein involved in cell stress response which acts as a dual regulator of transcription and autophagy. Acts as a positive regulator of autophagy. In response to cellular stress or activation of autophagy, relocates to autophagosomes where it interacts with autophagosome-associated proteins GABARAP, GABARAPL1/L2, MAP1LC3A/B/C and regulates autophagy. Acts as an antioxidant and plays a major role in p53/TP53-driven oxidative stress response. Possesses both a p53/TP53-independent intracellular reactive oxygen species (ROS) regulatory function and a p53/TP53-dependent transcription regulatory function. Positively regulates p53/TP53 and p73/TP73 and stimulates their capacity to induce apoptosis and regulate

cell cycle. In response to double-strand DNA breaks, promotes p53/TP53 phosphorylation on 'Ser-46' and subsequent apoptosis. Acts as a tumor suppressor by inducing cell death by an autophagy and caspase-dependent mechanism. Can reduce cell migration by regulating the expression of SPARC.

Cellular Location

Cytoplasm, cytosol. Nucleus. Nucleus, PML body. Cytoplasmic vesicle, autophagosome.
Note=Shuttles between the nucleus and the cytoplasm, depending on cellular stress conditions, and re- localizes to autophagosomes on autophagy activation

Tissue Location

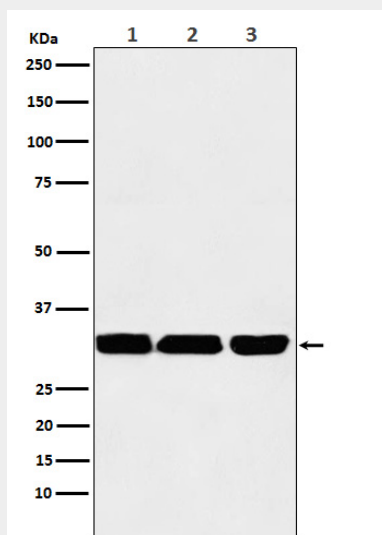
Ubiquitously expressed.

p53 DINP1 Antibody - Protocols

Provided below are standard protocols that you may find useful for product applications.

- [Western Blot](#)
- [Blocking Peptides](#)
- [Dot Blot](#)
- [Immunohistochemistry](#)
- [Immunofluorescence](#)
- [Immunoprecipitation](#)
- [Flow Cytometry](#)
- [Cell Culture](#)

p53 DINP1 Antibody - Images



Western blot analysis of p53 DINP1 expression in (1) HepG2 cell lysate; (2) RAW 264.7 cell lysate; (3) PC12 cell lysate.