

Rab25 Antibody
Rabbit mAb
Catalog # AP91823

Specification

Rab25 Antibody - Product Information

Application	WB
Primary Accession	P57735
Clonality	Monoclonal
Other Names	
CATX8; RAB11C; RAB25;	
Isotype	Rabbit IgG
Host	Rabbit
Calculated MW	23496 Da

Rab25 Antibody - Additional Information

Dilution	WB~~1:1000
Purification	Affinity-chromatography
Immunogen	A synthesized peptide derived from human Rab25
Description	Involved in the regulation of cell survival. Promotes invasive migration of cells in which it functions to localize and maintain integrin alpha-V/beta-1 at the tips of extending pseudopodia (PubMed:17925226). Involved in the regulation of epithelial morphogenesis through the control of CLDN4 expression and localization at tight junctions (By similarity).
Storage Condition and Buffer	Rabbit IgG in phosphate buffered saline , pH 7.4, 150mM NaCl, 0.02% sodium azide and 50% glycerol. Store at +4°C short term. Store at -20°C long term. Avoid freeze / thaw cycle.

Rab25 Antibody - Protein Information

Name RAB25 ([HGNC:18238](#))

Synonyms CATX8

Function

The small GTPases Rab are key regulators of intracellular membrane trafficking, from the formation of transport vesicles to their fusion with membranes. Rabs cycle between an inactive GDP-bound form and an active GTP-bound form that is able to recruit to membranes different set of downstream effectors directly responsible for vesicle formation, movement, tethering and fusion

(By similarity). RAB25 regulates epithelial cell differentiation, proliferation and survival, thereby playing key roles in tumorigenesis (PubMed:17925226). Promotes invasive migration of cells in which it functions to localize and maintain integrin alpha-V/beta-1 at the tips of extending pseudopodia (PubMed:17925226). Involved in the regulation of epithelial morphogenesis through the control of CLDN4 expression and localization at tight junctions (By similarity). May selectively regulate the apical recycling pathway (By similarity). Together with MYO5B regulates transcytosis (By similarity).

Cellular Location

Cell membrane; Lipid-anchor; Cytoplasmic side. Cytoplasmic vesicle. Cell projection, pseudopodium membrane. Note=Colocalizes with integrin alpha- V/beta-1 in vesicles at the pseudopodial tips. Colocalizes with RAB11A in subapical vesicles (By similarity).
{ECO:0000250|UniProtKB:P46629, ECO:0000269|PubMed:17925226}

Tissue Location

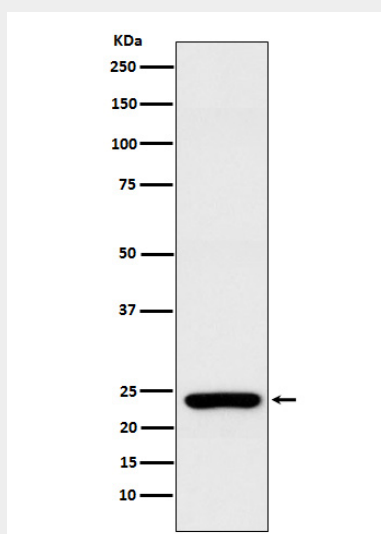
Expression is restricted to epithelial cells (PubMed:15502842). Expressed in ovarian epithelium (NOE) and breast tissue. Expressed in ovarian cancer; expression is increased relative to NOE cells. Expression in ovarian cancer is stage dependent, with stage III and stage IV showing higher levels than early stage cancers Expressed in breast cancer; expression is increased relative to normal breast tissue.

Rab25 Antibody - Protocols

Provided below are standard protocols that you may find useful for product applications.

- [Western Blot](#)
- [Blocking Peptides](#)
- [Dot Blot](#)
- [Immunohistochemistry](#)
- [Immunofluorescence](#)
- [Immunoprecipitation](#)
- [Flow Cytometry](#)
- [Cell Culture](#)

Rab25 Antibody - Images



Western blot analysis of Rab25 expression in MCF7 cell lysate.